

Modeling and mechanical perturbations reveal how spatially regulated anchorage gives rise to spatially distinct mechanics across the mammalian spindle

Pooja Suresh^{1,2,*}, Vahe Galstyan^{3,4,*}, Rob Phillips^{5,6,7,+} and Sophie Dumont^{1,2,7,8,+}

¹Biophysics Graduate Program, UCSF, San Francisco, CA 94158, USA

²Department of Bioengineering and Therapeutic Sciences, UCSF, San Francisco, CA 94158, USA

³A. Alikhanyan National Laboratory (Yerevan Physics Institute), Yerevan 0036, Armenia

⁴Biochemistry and Molecular Biophysics Option, California Institute of Technology, Pasadena, CA 91125, USA

⁵Division of Biology and Biological Engineering, California Institute of Technology, Pasadena, CA 91125, USA

⁶Department of Physics, California Institute of Technology, Pasadena, CA 91125, USA

⁷Chan Zuckerberg Biohub, San Francisco, CA 94158, USA

⁸Department of Biochemistry and Biophysics, UCSF, San Francisco, CA 94158, USA

*Co-first authors

+Corresponding authors (sophie.dumont@ucsf.edu, phillips@pboc.caltech.edu)

ABSTRACT

During cell division, the spindle generates force to move chromosomes. In mammals, microtubule bundles called kinetochore-fibers (k-fibers) attach to and segregate chromosomes. To do so, k-fibers must be robustly anchored to the dynamic spindle. We previously developed microneedle manipulation to mechanically challenge k-fiber anchorage, and observed spatially distinct response features revealing the presence of heterogeneous anchorage (Suresh et al. 2020). How anchorage is precisely spatially regulated, and what forces are necessary and sufficient to recapitulate the k-fiber's response to force remain unclear. Here, we develop a coarse-grained k-fiber model and combine with manipulation experiments to infer underlying anchorage using shape analysis. By systematically testing different anchorage schemes, we find that forces solely at k-fiber ends are sufficient to recapitulate unmanipulated k-fiber shapes, but not manipulated ones for which lateral anchorage over a 3 μm length scale near chromosomes is also essential. Such anchorage robustly preserves k-fiber orientation near chromosomes while allowing pivoting around poles. Anchorage over a shorter length scale cannot robustly restrict pivoting near chromosomes, while anchorage throughout the spindle obstructs pivoting at poles. Together, this work reveals how spatially regulated anchorage gives rise to spatially distinct mechanics in the mammalian spindle, which we propose are key for function.

INTRODUCTION

Cell division is essential to all life. The accurate segregation of chromosomes during cell division is achieved by the spindle, a macromolecular machine that distributes chromosomes equally to each new daughter cell. To perform this mechanical task, the spindle must be dynamic yet structurally robust: it must remodel itself and be flexible, yet robustly generate and respond to force to move chromosomes and maintain its mechanical integrity. How this is achieved remains an open question. Indeed, while much is known about the architecture (McDonald et al. 1992, Mastronarde et al. 1993) and dynamics (Mitchison 1989) of the mammalian spindle, and the molecules essential to its function (Hutchins et al. 2010, Neumann et al. 2010), our understanding of how they collectively give rise to robust mechanics and function lags behind.

In the mammalian spindle, kinetochore-fibers (k-fibers) are bundles of microtubules (McDonald et al. 1992, O'Toole et al. 2020, Kiewisz et al. 2021) that connect chromosomes to spindle poles, ultimately moving chromosomes to poles and future daughter cells. To do so, k-fibers must maintain their connection to the dynamic spindle. The k-fiber's connection (anchorage) to the spindle is mediated by a dense mesh-like network of non-kinetochore microtubules (non-kMTs) which connect to k-fibers along their length (Mastronarde et al. 1993, O'Toole et al. 2020) via both motor and non-motor proteins. Although this network cannot be easily visualized with light microscopy, physical perturbations such as laser ablation (Kajtez et al. 2016, Milas and Tolić 2016, Elting et al. 2017) and cell compression (Trupinić et al. 2020, Neahring et al. 2021) have been instrumental in uncovering how this network anchors k-fibers. The non-kMT network bears mechanical load locally (Milas and Tolić 2016, Elting et al. 2017), links sister k-fibers together (Kajtez et al. 2016), and contributes to k-fiber and spindle chirality (Trupinić et al. 2020, Neahring et al. 2021). Recent advances in microneedle manipulation enabled us to mechanically challenge k-fiber anchorage with unprecedented spatiotemporal control (Long et al. 2020, Suresh et al. 2020). Exerting forces at different locations along the k-fiber's length revealed that anchorage is heterogeneous along the k-fiber: k-fibers were restricted from pivoting near kinetochores, mediated by the microtubule crosslinker PRC1, but not near poles (Suresh et al. 2020). Such reinforcement helps robustly preserve the k-fiber's orientation in the spindle center, which we speculate forces sister k-fibers to be parallel and promotes correct attachment. However, how this reinforcement is enacted over space, namely how local or global it is, remains unclear. Furthermore, we do not yet understand which connections along the k-fiber's length are necessary and sufficient to give rise to such spatially distinct mechanics.

The precise spatiotemporal control achieved by microneedle manipulation offers rich quantitative information on the k-fiber's anchorage in the spindle (Suresh et al. 2020) and demands a quantitative model-building approach for its full interpretation. Knowledge of the spindle connections from electron microscopy (McDonald et al. 1992, Mastronarde et al. 1993, O'Toole et al. 2020) is not sufficient to understand how they collectively reinforce the k-fiber, and perturbing different regions of the network to experimentally test their contribution is challenging. Furthermore, while we can deplete spindle crosslinkers, quantitatively controlling their combined mechanical function over space is not currently within reach. In turn, a coarse-grained modeling approach (accounting for the effective influence of collective molecular actions) can allow us to systematically dissect the spatial regulation of k-fiber anchorage in the spindle. Since the bending mechanics of microtubules is well characterized (Gittes et al. 1993), many modeling studies have used shape to infer forces exerted on microtubules. This approach has been applied to single microtubules (Gittes et al. 1996, Brangwynne et al. 2006), microtubule bundles (Gadêlha et al. 2013, Portran et al. 2013), as well as k-fibers in the spindle (Rubinstein et al. 2009, Kajtez et al. 2016). To date, k-fiber models used native shapes (in unperturbed spindles) to infer underlying spindle forces, without focusing on k-fiber anchorage. This is mainly

because the presence of anchorage is not easily revealed in unperturbed spindles. Using k-fiber manipulation in mammalian spindles, we are uniquely positioned to probe k-fiber anchorage forces previously hard to detect, and to test models for their underlying basis.

Here, we use coarse-grained modeling and microneedle manipulation experiments to define the spindle anchorage forces necessary and sufficient for the k-fiber to robustly restrict pivoting near kinetochores while allowing pivoting at poles (Figure 1, top). We model the k-fiber using Euler-Bernoulli beam theory. We systematically increase model complexity and use shape analysis to infer the minimal set of forces needed to recapitulate experimental k-fiber shapes. We find that while forces and moments at k-fiber ends (end-point anchorage) alone are sufficient to recapitulate unmanipulated shapes, lateral anchorage is needed to preserve k-fiber orientation in the spindle center in manipulated spindles. We then systematically test different length scales of lateral anchorage. Global anchorage leads to a loss of mechanical distinction in the pole and kinetochore regions – a prediction confirmed by manipulating spindles with globally increased anchorage. In turn, local anchorage preserves the mechanical distinction observed in control manipulations, and a length scale of 3 μm near kinetochores is necessary and sufficient to recapitulate observed manipulated shapes. This localized anchorage can preserve k-fiber orientation near kinetochores without significant k-fiber-to-network detachment for a broad range of microneedle forces. Thus, strong local anchorage enacted locally within 3 μm of kinetochores can ensure that sister k-fibers remain aligned and bioriented in the spindle center robustly, while allowing their pivoting and clustering into poles. Together, we demonstrate how spatially regulated anchorage gives rise to spatially distinct mechanics, which we propose support different functions across the spindle.

RESULTS

Forces and moments acting on k-fiber ends alone can capture native mammalian k-fiber shapes

To determine the spindle forces necessary and sufficient to recapitulate k-fiber shapes, we use the Euler-Bernoulli formalism of beam deformation (Landau and Lifshitz 1984). Through the equation $\kappa(x) = M(x)/EI$ (Figure 1, bottom), this formalism relates the curvature $\kappa(x)$ of the beam at a given position (x) to the local bending moment $M(x)$ (the moment of internal stresses that arise from forces exerted) and the flexural rigidity EI (a measure of resistance to bending that depends on the elastic modulus E and the areal moment of inertia I of the beam). We treat the k-fiber as a single homogeneous beam (Rubinstein et al. 2009, Kajtez et al. 2016) that bends elastically in response to force (see Methods).

In the mammalian metaphase spindle, native k-fibers appear in a variety of curved shapes which arise from the molecular force generators that maintain the spindle (Elting et al. 2018, Nazockdast and Redemann 2020, Tolić and Pavin 2021). To obtain a minimal description of native k-fiber shape generation, we considered point forces and moments acting only on the pole and kinetochore ends of the k-fiber (Rubinstein et al. 2009). These could arise from motor and non-motor microtubule associated proteins that exert force on and anchor k-fiber ends, for example from dynein and NuMA at poles (Heald et al. 1996, Merdes et al. 1996), and NDC80 at the kinetochore (DeLuca et al. 2006). We considered a coordinate system where the pole is at the origin ($x=y=0$) and the kinetochore lies along the x -axis at position $x=L$ (Figure 2a). In this system, a force at the pole (\mathbf{F} with components F_x and F_y), an equal and opposite force at the kinetochore (at equilibrium), and a moment at the pole (M_p) and at the kinetochore (M_k) together define the shape of the k-fiber at every position $\mathbf{r}(x)$ via the moment balance condition ($\mathbf{M}(x) = \mathbf{M}_p + \mathbf{r}(x) \times \mathbf{F}$, with $M_k = M(x=L)$). The relatively small deflection of native k-fibers allowed us to solve for their shape profiles analytically and gain insight into how these forces and

moments uniquely contribute to shape (see Supplementary Information Section A). We found that a purely axial force F_x generates a symmetric shape profile with the peak (position where the deflection $y(x)$ is the largest) located in the middle of the pole-kinetochore axis (Figure 2b, top). In the absence of an axial force F_x , the moment at the pole M_p and corresponding force F_y generate an asymmetric shape profile with the peak shifted towards the pole (Figure 2b, middle); conversely, the moment at the kinetochore M_k and corresponding force F_y generate an asymmetric shape profile with the peak shifted towards the kinetochore (Figure 2b, bottom). This finding is consistent with the idea that each force and moment component acting on the ends uniquely contribute to k-fiber shape.

To determine which subset of force components (Figure 2b) is necessary and sufficient to capture native k-fiber shapes, we imaged native k-fibers in PtK2 GFP-tubulin cells at metaphase ($m=26$ cells, $n=83$ k-fibers) and extracted the distribution of peak locations along their length (Figure 2c). Most peaks are located closer to the pole or in the middle of the k-fiber (Figure 2d), suggesting that the moment M_k is not essential for their shape generation. We then fit different combinations of force components in our model to the shape profiles extracted from the data (see Methods). We evaluated the quality of model fits based on two metrics: fitting error (measured by calculating the root mean square error, Figure 2e) and comparison of peak locations between the model fit and data shape profiles (Figure 2f). The combination of F_x , F_y and M_p together produced the lowest fitting error (Figure 2e), and accurately predicted the peak locations (Figure 2f, example fits in Figure 2g), while the other subsets of force components performed significantly worse on both metrics. The inclusion of M_k along with F_x , F_y and M_p did not significantly improve the quality of fits (Figure 2 – figure supplement 1), revealing that M_k is indeed not necessary to recapitulate native k-fiber shapes. Taken together, while native k-fiber shapes are diverse, the consistent shift in peaks toward the pole reveals a key mechanical role for the moment at the pole. This indicates that forces at the k-fiber ends and a moment at the pole (F , M_p), but not at the kinetochore ($M_k = 0$), are alone necessary and sufficient to recapitulate native k-fiber shapes.

Having established our minimal native k-fiber model, we used it to examine how shape and force generation (F , M_p) vary across k-fiber angles with respect to the spindle's pole-pole axis (Figure 2 – figure supplement 2a). We hypothesized that outer k-fibers, with larger angles from the pole-pole axis and which visually appear more bent, would be exposed to larger forces and moments. While k-fibers with larger angles indeed have larger deflections on average (Figure 2 – figure supplement 2b-c), we observed no detectable trend in inferred force parameters (Figure 2 – figure supplement 2d-e), suggesting a lack of distinction in the force generation across different k-fiber angles in the spindle. Instead, our model suggests that the greater average length of outer k-fibers (Figure 2 – figure supplement 2f) is sufficient to capture their larger deflections (Figure 2 – figure supplement 2g). Thus, k-fiber length can serve as another contributor to the observed shape diversity. Together, by connecting shape to forces we determine that point forces on k-fiber ends and a moment at the pole are sufficient to recapitulate the diverse array of native k-fibers, and postulate that force generation is not differentially regulated across k-fiber angles in the mammalian spindle.

Manipulated k-fiber response cannot be captured solely by end-point anchoring forces and moments

Having defined a minimal model for native k-fiber shape generation, we turned to manipulated k-fibers, under the premise that mechanical perturbations can more discriminately expose underlying mechanics. We sought to determine the spindle forces necessary and sufficient to restrict the k-fiber's free pivoting near the kinetochore (reflected by a negative curvature in that region) but not near the pole when under external force (Figure 3a) (Suresh et al. 2020). We included in our model an external microneedle force (F_{ext}) treated as a point force (Supplementary Information Section B) whose contribution to the bending

moment at $\mathbf{r}(x)$ is $(\mathbf{r}(x) - \mathbf{r}_{\text{ext}}) \times \mathbf{F}_{\text{ext}}$. To build up model complexity systematically, we first tested whether the minimal spindle forces acting solely on k-fiber ends (\mathbf{F} , M_p with $M_k = 0$) together with \mathbf{F}_{ext} (Figure 3b) can capture manipulated k-fibers. We extracted the k-fiber shape profiles from GFP-tubulin PtK2 metaphase spindles under manipulation ($m=18$ cells, $n=19$ k-fibers, deformed by $2.5 \pm 0.2 \mu\text{m}$ over 60.5 ± 8.8 s, Figure 3 – video 1) (Suresh et al. 2020) and fit the model (see Supplementary Information Sections C and D for fitting details). The model failed to capture the negative curvature region near kinetochores (Figure 3c), giving rise to fitting errors that are 10-fold larger than the native k-fiber model (Figure 3f).

We then hypothesized that introducing a negative moment M_k at the kinetochore to restrict free pivoting there could be sufficient to recapitulate manipulated k-fiber shapes (Figure 3d). Performing fits to the data revealed that the model with M_k produced a negative curvature near the kinetochore (Figure 3e), leading to a substantial decrease in the fitting errors compared to the model where $M_k = 0$. However, the fitting errors are still not comparable to those of the native k-fiber model (Figure 3f). To better evaluate the model's performance, we compared several signature shape features between the data and model. While the model with M_k accurately captures the positions of positive curvature maxima (Figure 3g), it consistently fails to capture the positions of negative curvature minima (Figure 3h, example in Figure 3e). The positions of curvature minima in the experimental data span a range of 0.5-3 μm from the kinetochore; however, they are much more localized (within 0.5 μm) in model generated profiles (Figure 3h). Similarly, the model fails to capture the region over which the k-fiber's orientation angle near the kinetochore is preserved, which spans 3 μm in the data (Figure 3i, Figure 3 – figure supplement 1). This indicates that although a moment at the kinetochore restricts free pivoting, it does so too locally, and thus fails to preserve k-fiber orientation over a few micrometers across the spindle center. Thus, we exclude the possibility of end-localized anchoring forces and moments being the sole contributors to the response features observed in manipulated k-fibers.

Mapping the relationship between anchorage length scales and manipulated k-fiber shapes constrains the spatial distribution of lateral anchorage

To determine the forces needed to preserve k-fiber orientation at a relevant length scale in the spindle center (Figure 3h-i) and to also capture the observed mechanical distinction between the kinetochore and pole regions, we investigated how lateral anchorage along the k-fiber's length influences the k-fiber's mechanical behavior. We sought to systematically vary the spatial distributions of lateral anchorage and map the k-fiber's response to force. Our previous work revealed that the crosslinking protein PRC1, which preferentially binds antiparallel microtubules and helps organize bridging-fibers (Jagrić et al. 2021), plays a key role in mediating the lateral anchorage responsible for negative curvature near kinetochores (Suresh et al. 2020). However, how the absolute levels of PRC1 along k-fibers (Polak et al. 2017, Suresh et al. 2020) map to mechanical anchorage is unknown, thus motivating the need to directly vary lateral anchorage in space.

We enhanced our model, treating the anchoring network to which the k-fiber is coupled as a uniformly distributed series of elastic springs which exert restoring forces $\mathbf{f}(x)$ along the region of anchorage (Figure 4a). In our treatment, the anchoring network does not detach from the k-fiber (see Methods). In a simulation study, we systematically tuned the length scale of lateral anchorage near the kinetochore ($\sigma = 1-10 \mu\text{m}$), and initially considered a step function distribution of anchorage present only within the region $L-\sigma < x < L$. Mimicking our previous experimental procedure (Figure 4b) (Suresh et al. 2020), we also tuned the position of the microneedle.

K-fiber shape profiles simulated with different anchorage length scales σ revealed a broad array of negative curvature responses, where the positions of curvature minima were strongly affected by the choice of σ (Figure 4c). To probe the relationship between the anchorage length scale and the k-fiber's response to force, we compared these simulated k-fiber shape profiles to manipulation experiments in control spindles (Suresh et al. 2020) and spindles where crosslinking was globally increased experimentally. Consistent with wildtype spindle manipulations ($2.5 \pm 0.2 \mu\text{m}$ over $60.5 \pm 8.7 \text{ s}$ (Suresh et al. 2020)), simulated shapes with local anchorage (example of $\sigma = 2 \mu\text{m}$ for $10 \mu\text{m}$ long k-fiber in Figure 4d) had a negative curvature response only near the kinetochore (and not near the pole) that remained localized for a range of microneedle positions, thereby generating spatially distinct mechanical responses between the pole and kinetochore regions. Local anchorage with $\sigma = 1\text{-}3 \mu\text{m}$ near the kinetochore best captures the range of experimentally observed curvature minima positions (Figure 4c). On the other hand, simulated shapes with global anchorage (example of $\sigma = 10 \mu\text{m}$ along the entire k-fiber length in Figure 4e) had negative curvature on both the kinetochore and pole sides of the microneedle, leading to a loss of mechanical distinction between these two regions. Additionally, with global anchorage the curvature minima positions do not remain localized near the kinetochore but rather move with the microneedle position. To test this experimentally, we globally increased crosslinking with FCPT treatment – a drug that rigor-binds kinesin-5 to microtubules (Groen et al. 2008). Consistent with the global anchorage model predictions, manipulations in FCPT-treated spindles ($2.7 \pm 0.1 \mu\text{m}$ over $59.6 \pm 2.7 \text{ s}$ in GFP-tubulin PtK2 cells, $m=10$ cells, $n=13$ k-fibers) (Figure 4f, Figure 4 – figure supplement 1) resulted in negative curvature on both sides of the microneedle (Figure 4g), and its position moved as the microneedle was moved (Figure 4h, Figure 4 – video 1). Thus, local anchorage is required to capture both the spatially distinct mechanics and localized nature of the negative curvature response observed in wildtype manipulated k-fibers.

Given this finding, and PRC1's known role in localized anchorage (Suresh et al. 2020), we asked if an anchorage distribution reflecting PRC1's abundance in the spindle is sufficient to capture the localized negative curvature response. Mimicking PRC1 levels from immunofluorescence imaging (Suresh et al. 2020), we set the length scale of enrichment to be $\sigma = 3 \mu\text{m}$ from the kinetochore, and the basal anchorage elsewhere to be 60% of this enriched region. Assuming PRC1 molecules are equally engaged everywhere, our model predicted that the curvature minimum moves with the microneedle (Figure 4 – figure supplement 2), contrary to our experimental observation (Figure 4b). Together with the finding that PRC1 is required for the manipulation to result in a negative curvature response (Suresh et al. 2020), this suggests that PRC1's crosslinking engagement varies over space, and that its abundance is not a good proxy for its mechanical engagement.

To probe how local or global the mechanical engagement of PRC1 is in the spindle and gain intuition on how this gives rise to the observed localized negative curvature response, we proceeded to more precisely define the region over which PRC1 actively crosslinks microtubules. While the precise spatial distribution of PRC1 engagement cannot be directly measured *in vivo*, we sought to extract this information from immunofluorescence data (Suresh et al. 2020) using an equilibrium binding model. Specifically, we distinguished between the doubly bound ($c_2(\mathbf{r})$, actively crosslinking two microtubules), singly bound ($c_1(\mathbf{r})$, on one microtubule but not crosslinking), and freely diffusing (c_f) states from the measured total ($c_{\text{tot}}(\mathbf{r})$) PRC1 abundance (Supplementary Information Section E). Based on the facts that PRC1 binds much more weakly to parallel microtubules (30-fold lower affinity than to antiparallel microtubules (Bieling et al. 2010)), and that microtubules near poles are predominantly parallel (Euteneuer and McIntosh 1981), we considered PRC1 engagement in this region to be negligible. Under these conditions, the model infers the actively engaged PRC1 ($c_2(\mathbf{r})$) to be predominantly in the spindle center and substantially lower away from the center (Figure 4i). This is akin to the local anchorage scenarios without basal levels (tested in Figure 4c,d) and suggests that while PRC1's enrichment on top

of a basal level cannot give rise to a localized negative curvature response (Figure 4 – figure supplement 2), its locally distributed mechanical engagement can do so.

Taken together, systematically exploring the k-fiber responses that arise from different anchorage length scales revealed the need for lateral anchorage to be local, and defining PRC1's abundance-to-anchorage relationship helped demonstrate how it could provide such local anchorage.

Minimal k-fiber model infers strong lateral anchorage within 3 μm of kinetochores to be necessary and sufficient to recapitulate manipulated shape profiles

Having demonstrated the essential role of local anchorage in producing a negative curvature k-fiber response near the kinetochore, we investigated if its inclusion in our minimal k-fiber model is sufficient to recapitulate all response features of manipulated k-fibers; and if so, over what length scale does this anchorage need to be? Because of the challenges in extracting an accurate deformation map of the anchoring network under manipulation, using a model with distributed springs (Figure 4a) that would require this information as an input, was not feasible. We therefore captured the collective influence of localized anchorage forces using an effective point crosslinking force \mathbf{F}_c (Figure 5a). This approach allows us to learn about both the mechanics and spatial regulation of anchorage, while being agnostic of the network's constitutive law and also simplifying the parameter search. We validated this coarse-grained approach by simulating k-fiber shapes with different local anchorage distributions near the kinetochore, and performing fits to these shapes using the minimal model (Figure 3b) with now \mathbf{F}_c in place (Figure 5 – figure supplement 1a). Indeed, the fits revealed the inferred magnitude of \mathbf{F}_c to be close to the integrated anchorage force (Figure 5- figure supplement 1b), and its position x_c (a distance λ_c from the kinetochore) to be consistently proximal to the edge of the localized anchorage region σ where anchorage forces are the largest (Figure 5 – figure supplement 1c-d). Thus, an effective point crosslinking force \mathbf{F}_c can successfully coarse-grain locally distributed anchorage forces.

We then fit the model with an effective point force \mathbf{F}_c to all observed manipulated k-fiber shape profiles. In all but four cases with significantly large positive curvature values (Figure 5 – figure supplement 2) (which could be suggestive of local fracturing due to the microneedle force (Schaedel et al. 2015)), the model accurately recapitulated the data (Figure 5b). This is reflected in the significantly lower fitting errors compared to the previous manipulated k-fiber models (Figure 5c). To better evaluate the model's performance, we compared several signature shape features between the data and model. The curvature maxima and minima positions (Figure 5d-e, example in Figure 5b right), and length scale over which k-fiber orientation is preserved were all captured accurately (Figure 5f). Thus, an effective point crosslinking force (\mathbf{F}_c) that coarse-grains the local anchorage near the kinetochore, together with \mathbf{F} , \mathbf{M}_p and \mathbf{F}_{ext} , define the minimal model sufficient to recapitulate the shapes of manipulated k-fibers.

Next, we investigated the length scale of lateral anchorage inferred by the minimal model to recapitulate manipulated k-fiber shapes. Across all manipulated k-fibers in the dataset, the model infers λ_c (which directly informs on the anchorage length scale (Figure 5 – figure supplement 1d)) to be consistently within 3 μm of kinetochores (Figure 5g), indicating that this length scale of lateral anchorage is necessary and sufficient to robustly restrict k-fiber pivoting across the spindle center without obstructing pivoting at poles. This result is in close agreement with the anchorage length scales predicted from the simulated shapes (Figure 4c) and the region where actively engaged PRC1 is predicted to be predominantly present (Figure 4i). We also identified a strong correlation between the inferred anchorage length scale (λ_c) and curvature minimum position (Figure 5h). While previously we associated the occurrence of negative curvature with the presence of anchorage (Suresh et al. 2020), this

finding now offers an interpretation for the position of curvature minimum as a quantitative predictor of the length scale of local anchorage.

Finally, having arrived at a minimal model sufficient to recapitulate the k-fiber's response to manipulation, we sought to further dissect the results of model inference to learn about the emergent mechanics of the anchoring network dictating this response. Our model inference revealed that in response to microneedle forces ranging from 400 pN to 1500 pN (that cause k-fiber deformations (y_{\max}) up to ≈ 5 times native deformations), the anchoring network generated forces ranging from 100 pN to 700 pN to resist pivoting in the spindle center (see Methods). Interestingly, we found a linear relationship between the inferred crosslinking force (F_c) and microneedle force (F_{ext}). This linear dependence does not plateau beyond a certain microneedle force, which would have been indicative of detachment from the k-fiber (Figure 5i, consistent with model A but not model B). This indicates that under the assumptions of our model, the anchoring network is strong enough to withstand large microneedle forces (producing $y_{\max}^{\text{manip}} / y_{\max}^{\text{native}} \gg 1$) without significant detachment from the k-fiber. Parameter inference from our minimal model therefore provides physical intuition for how the anchoring network can restrict k-fiber pivoting near kinetochores.

Altogether, by systematically building up complexity to determine the minimal model that can recapitulate k-fiber shapes under manipulation, our work sheds light on the spatial regulation and mechanics of anchorage necessary and sufficient for robust k-fiber reinforcement in the spindle center.

DISCUSSION

The k-fiber's ability to be dynamic and generate and respond to forces while robustly maintaining its connections and orientation within the spindle is critical for accurate chromosome segregation. Here, we asked (Figure 1): where along the k-fiber are its connections necessary and sufficient to robustly preserve its orientation in the spindle center while allowing pivoting at poles? We determined that while end-forces and moments can recapitulate unmanipulated k-fibers (Figure 2), they are insufficient to capture the manipulated k-fiber's response. Specifically, without lateral anchorage, the model fails to robustly restrict the k-fiber's pivoting throughout the spindle center region (Figure 3). In turn, having anchorage all along the k-fiber's length restricts pivoting at poles (Figure 4). Thus, in both cases, the signature mechanical distinction between the pole and kinetochore regions is lost. Our minimal model revealed that local anchorage within 3 μm of kinetochores is necessary and sufficient to accurately recapitulate the spatially distinct response of manipulated k-fibers, and that this length scale can be quantitatively inferred from the location of negative curvature, a signature shape feature of anchorage (Figure 5). Such reinforcement near kinetochores is well suited to ensure that sister k-fibers remain aligned with each other and bi-oriented in the spindle center, and can at the same time pivot and cluster into poles. Thus, by combining theory based on shape analysis and perturbations that expose underlying mechanics, our work provides a framework to dissect how spindle architecture gives rise to its robust and spatially distinct mechanics (Figure 6), and ultimately function.

The minimal model for native k-fibers enabled us to explore the physical mechanisms underlying force generation and k-fiber shapes within the spindle (Figure 2). It provides a framework to connect molecular-scale and cellular-scale spindle mechanics and better understand the origins of \mathbf{F} and M_p and of shape diversity across k-fibers and spindles. For example, it has been long known that NuMA and dynein focus microtubules at poles (Heald et al. 1996, Merdes et al. 1996); indeed, perturbing these proteins leads to straighter k-fibers (Wittmann and Hyman 1998, Howell et al. 2001, Elting et al. 2017, Guild et al. 2017) and altered spindle shapes (Oriola et al. 2020). How these molecules individually and

together dictate native k-fiber shapes in mammalian spindles, and what their role is in the moment generation inferred at the pole M_p , are exciting questions for future work. In addition to molecular forces playing a role in k-fiber shape generation and diversity, our study proposes that diverse k-fiber lengths from their arrangement within the spindle (inner vs. outer) can lead to diverse k-fiber shapes. This motivates better understanding the role of other architectural features that vary across species (e.g. presence or absence of poles, spindle size, chromosome number) in contributing to k-fiber shape (Helmke et al. 2013, Crowder et al. 2015). Addressing these questions will shed light on the mechanisms ensuring robust spindle structure and function across evolution.

Our work focused on lateral anchorage in space, and revealed that local anchorage within $3\ \mu\text{m}$ of kinetochores ensures that sister k-fibers remain straight in the spindle center (Figures 5). This could, for example, promote biorientation of chromosomes, and ultimately their accurate segregation. Further, since chromosome metaphase oscillations in PtK2 spindles span $2\ \mu\text{m}$ on either side of the metaphase plate (Zaytsev et al. 2014), lateral anchorage of a similar length scale can help ensure that sister k-fibers maintain their alignment with each other throughout this region. This offers a potential explanation for why anchorage of this precise length scale can provide a robust connection to the dynamic spindle, and raises the question of how this length scale varies across spindles with different metaphase chromosome movement amplitudes. Additionally, as the dynamic k-fiber plus-end is constantly growing and shrinking (Saxton et al. 1984), connections between the k-fiber and anchoring microtubule network naturally break. At least some of these connections also turnover rapidly, on a seconds timescale (Subramanian et al. 2010, Pamula et al. 2019), compared to the minutes timescale of chromosome movement. Thus, having an array of connections spanning $3\ \mu\text{m}$ (rather than a very localized length scale or having no lateral anchorage (Figure 3)) can ensure that at least some of them are still present and engaged to robustly reinforce the spindle center. In turn, not having similarly strong lateral anchorage in the pole region (Figure 4) can allow k-fibers and other microtubules to flexibly pivot and cluster effectively at the poles, which is thought to be important for spindle structural maintenance and bring chromosomes to daughter cells. Taken together, spatially regulated lateral anchorage is well suited to enable different functions across different regions in the spindle (Figure 6).

In addition to the spatial regulation of anchorage, mechanical properties of the anchoring network are also critical for our understanding of how k-fibers respond to force. Our model revealed a linear relationship between inferred microneedle forces and anchorage force from the network in the regime probed, characteristic of an elastic response (Figure 5i). While individual crosslinker detachment (Forth et al. 2014, Pyrpassopoulos et al. 2020) in the network must occur, such behavior does not dominate the collective response to microneedle force. How the architecture of the non-kMT network and the biophysical properties (ability to withstand and respond to force (Yusko and Asbury 2014)) of the many motor and non-motor microtubule associated proteins within it dictate network mechanics is an open question. Answering these questions for the mammalian spindle will require probing the physical (Belmonte et al. 2017, Oriola et al. 2018) and molecular (Kajtez et al. 2016, Elting et al. 2017, Suresh et al. 2020, Risteski et al. 2021) basis of the anchoring network's emergent properties, to which controlled mechanical (such as microneedle manipulation) and molecular perturbations (Jagrić et al. 2021) as well as modeling approaches (Nedelec and Foethke 2007) will be key. Looking forward, experiments and modeling will also be useful in shedding light on the temporal dynamics of anchorage mechanics – for example, how the timescale of network relaxation relates to the kinetics of molecular turnover (Saxton et al. 1984, Pamula et al. 2019) and the manipulation protocol.

Finally, we developed our model under a set of assumptions, and relaxing some of them will provide new opportunities to test the role of additional features in determining k-fiber shape. First, we assumed that the k-fiber is mechanically homogeneous along its length. Electron microscopy of spindles

revealed that k-fiber microtubules decrease in number closer to the pole (McDonald et al. 1992), and that their length and organization can vary depending on the system (O'Toole et al. 2020, Kiewisz et al. 2021). These factors can affect the k-fiber's flexural rigidity along its length (Ward et al. 2014). Second, we assumed that the k-fiber bends elastically in response to microneedle force. Forces from the microneedle could create local fractures in the microtubule lattice that leads to softening at the site of force application (Schaedel et al. 2015), and indeed, performing manipulations with larger deformations over longer timescales result in complete breakage of the k-fiber (Long et al. 2020). Exploring the contributions of a spatially variable flexural rigidity due to changes in microtubule number or local softening will help our understanding of how k-fiber mechanics and remodeling affect its response to force. More broadly, the ability to measure forces with force-calibrated microneedles (Nicklas 1983, Shimamoto et al. 2011) in mammalian spindles will not only help test some of these assumptions but also further refine our modeling framework.

Based on our work, we propose spatial regulation of anchorage as a simple principle for how the spindle can provide differential reinforcement across its regions to support spatially distinct core functions needed to maintain its mechanical integrity. More broadly, our work demonstrates the combination of mechanical perturbation experiments and coarse-grained modeling as a useful strategy for uncovering the mechanical design principles underlying complex cellular systems.

ACKNOWLEDGEMENTS

We thank Alexey Khodjakov for PtK2 GFP- α -tubulin cells and Timothy Mitchison for FCPT. We are grateful to Nenad Pavin for helpful discussions, and Arthur Molines, Soichi Hirokawa, Miquel Rosas Salvans, Lila Neahring, Caleb Rux, Gabe Salmon, and other members of the Phillips and Dumont Labs for critical feedback on our work. This work was supported by NIH 1R01GM134132, NIH R35GM136420, NSF CAREER 1554139, NSF 1548297 Center for Cellular Construction, NIH 2R35GM118043-06, the John Templeton Foundation 51250 and 60973 (R.P.), the Chan Zuckerberg Biohub (S.D. and R.P.), NSF Graduate Research Fellowship and a UCSF Kozloff Fellowship (P.S.).

COMPETING INTERESTS

The authors declare no competing financial or non-financial interests.

MATERIALS AND METHODS

Data collection and acquisition:

Most of the experimental observations that motivate this work are from (Suresh et al. 2020). The new experiments performed in this work (Figure 4f-h) were performed consistently with these experiments.

Cell culture: Experiments were performed using PtK2 GFP- α -tubulin cells (stable line expressing human α -tubulin in pEGFP-C1, Clontech Laboratories, Inc; a gift from A Khodjakov, Wadsworth Center, Albany, NY (Khodjakov et al. 2003)), which were cultured as previously reported (Suresh et al. 2020).

Drug/dye treatment: For the study in Figure 4f-h where we investigated the k-fiber's response to force under increased global crosslinking, we treated cells with FCPT (2-(1-(4-fluorophenyl)cyclopropyl)-4-(pyridin-4-yl)thiazole) (gift of T Mitchison, Harvard Medical School, Boston, MA), which rigor binds Eg5 (Groen et al. 2008). Cells were incubated with 20 μ M of FCPT for 15-30 min before imaging.

Imaging: PtK2 GFP- α -tubulin cells were plated on 35 mm #1.5 coverslip glass-bottom dishes coated with poly-D-lysine (MatTek, Ashland, MA) and imaged in CO₂-independent MEM (Thermo Fisher). Cells were maintained at 27–32°C in a stage top incubator (Tokai Hit, Fujinomiya, Japan), without a lid. Live imaging was performed on a CSU-X1 spinning-disk confocal (Yokogawa, Tokyo, Japan) Eclipse Ti-E inverted microscopes (Nikon) with a perfect focus system (Nikon, Tokyo, Japan), and included the following components: head dichroic Semrock Di01-T405/488/561, 488 nm (150 mW) and 561 (100 mW) diode lasers (for tubulin and microneedle respectively), emission filters ETGFP/mCherry dual bandpass 59022M (Chroma Technology, Bellows Falls, VT), and Zyla 4.2 sCMOS camera (Andor Technology, Belfast, United Kingdom). Cells were imaged via Metamorph (7.10.3, MDS Analytical Technologies) by fluorescence (50–70 ms exposures) with a 100 \times 1.45 Ph3 oil objective through a 1.5X lens, which yields 65.7 nm/pixel at bin = 1.

Microneedle manipulation: The instruments, setup and protocol used for microneedle manipulation experiments were closely reproduced from previous work (Suresh et al. 2020). Computer control (Multi-Link, Sutter Instruments) was used to ensure smooth and reproducible microneedle movements. Manipulations in FCPT-treated spindles generated microneedle movements of $2.7 \pm 0.3 \mu\text{m}/\text{min}$, consistent with previously performed wildtype spindle manipulations ($2.5 \pm 0.1 \mu\text{m}/\text{min}$) (Suresh et al. 2020).

Data extraction, processing, and quantifications:

To fit models to the data, we extracted k-fiber profiles acquired from imaging. Profile extraction was performed manually with FIJI. These profiles were rotated and aligned such that the pole and kinetochore ends are along the x-axis before model fitting. Local curvature was calculated by fitting a circle to consecutive sets of three points (spaced apart by 1 μm) along profiles and taking the inverse of the radius of the fitted circle (units= μm^{-1}). Further details on profile extraction and curvature calculation were as described in previous work (Suresh et al. 2020).

To distinguish between the different binding states using the equilibrium binding model (Figure 4i), we quantified the intensity of PRC1 and tubulin in 3 different regions: 1) across the entire spindle between the two spindle poles (not including the poles), 2) outside the spindle but inside the cell (PRC1's free population), where the cell's boundary was determined using high intensity contrast and 3) close to spindle poles (where microtubules are thought to be predominantly parallel). We averaged across

multiple ROIs for 2) and 3), where the size of the ROI was kept constant (~8 pixel wide). The measured intensity was normalized by the area of the ROIs. The chosen regions of interest for these measurements are shown in an example spindle in Supplementary Information Section E.

Euler-Bernoulli framework for modeling k-fiber deformations

We adopt the Euler-Bernoulli formalism as a framework to model how k-fibers bend elastically in response to force (Gittes et al. 1993, Brangwynne et al. 2006, Jiang and Zhang 2008). In this framework, curvature $\kappa(x)$ at a given position x is specified through the Euler-Bernoulli equation, namely, $\kappa(x) = -M(x)/EI$. Here, $M(x)$ is the bending moment at position x , and EI is the flexural rigidity of the k-fiber. Details on $M(x)$ further discussed in the Supplementary Information Section A, and the flexural rigidity EI further discussed below.

Flexural rigidity

Flexural rigidity (EI) is defined as the product of the elastic bending modulus (E , an intrinsic property and therefore a constant) and the areal moment of inertia (I , the second moment of inertia of the k-fiber cross section). We assume flexural rigidity of the k-fiber (EI) is constant all along its length. This is motivated by electron microscopy studies, which reveal that PtK2 cells have a large percentage of kinetochore microtubules in the k-fiber that extend all the way from the kinetochore to the pole (McDonald et al. 1992). This assumption allows us to report forces and moments in a ratio with EI , making our analysis independent of the precise numerical value of EI . In Figure 2 – figure supplement 2, we report values of M_p and F_x as described here.

In Figure 5h, we report absolute forces inferred by the model. Since flexural rigidity for k-fibers has not yet been measured, we make a numerical estimate based on 1) the known number of microtubules in the k-fiber, which ranges from 15 to 25 (McEwen et al. 1998), 2) the known flexural rigidity of a single microtubule, $2.2 \times 10^{-23} \text{ Nm}^2$ (Gittes et al. 1993), and 3) an assumption on the strength of coupling between the microtubules in the k-fiber. The flexural rigidity of the bundle will either scale linearly with the number of microtubules (N), if the microtubules are weakly coupled and can slide with respect to each other during bending ($EI_{k\text{-fiber}} = N \cdot EI_{MT}$), or scale quadratically with that number if they are strongly coupled and cannot slide during bending ($EI_{k\text{-fiber}} = N^2 \cdot EI_{MT}$) (Claessens et al. 2006). In this work, we assume that microtubules within the k-fiber can slide ($EI_{k\text{-fiber}} = N \cdot EI_{MT}$) and take the number of microtubules $N = 20$. This results in a value of $400 \text{ pN} \cdot \mu\text{m}^2$ for the flexural rigidity for the k-fiber, which we apply to Figure 5h in order to obtain absolute force estimates inferred by the minimal model.

Modeling of native k-fiber shapes

When studying the native k-fiber shapes, we invoke the small-angle approximation ($|y''(x)| \ll 1$ and $\kappa(x) \approx y''(x)$) which yields a second-order ordinary differential equation for the k-fiber profile $y(x)$. This allows us to find an analytical solution for $y(x)$ and gain insights about the role of different force contributions in dictating k-fiber shapes features (Figure 2b). Analytical calculations of $y(x)$ under different scenarios and a detailed discussion of the resulting shape features can be found in Supplementary Information Section A. There, we also demonstrate the validity of the approximation by showing the agreement between its results and those obtained by a numerical solution of the exact nonlinear equation for $y(x)$. When reporting inferred parameter values and fitting errors in Figure 2e-f, results of fitting the exact numerical solution of $y(x)$ were used.

Modeling external force from the microneedle

The force exerted by the microneedle on the k-fiber was treated as a point force in our model. The microneedle, however, has a finite diameter, and the force it exerts is transmitted along its finite length

of contact with the k-fiber. To validate the point force assumption, we simulated k-fiber profiles by considering spatially distributed microneedle forces acting along lengths ranging from $0.5 \mu\text{m}$ to $1.5 \mu\text{m}$ (Suresh et al. 2020). K-fiber profiles in these different settings matched each other with high accuracy when the integrated force was kept the same. In addition, when fitting a point force model to these profiles, the inferred location of the exerted point force was within $\approx 0.02 \mu\text{m}$ of the center of the distributed force region, and the fitting errors were very low (RMSE $\approx 0.03 \mu\text{m}$). Together, these studies justify the point force assumption for the external force. A more detailed discussion of this validation study and supporting figures are included in Supplementary Information Section B.

In addition, since the manipulations are performed very slowly (average speed $\approx 0.04 \mu\text{m/s}$, (Suresh et al. 2020)), we considered the resulting frictional/viscous force to be negligible compared to the force acting perpendicular to the k-fiber, and thus defined \mathbf{F}_{ext} to be perpendicular to the tangent of the k-fiber profile.

Distributed anchorage: To study the effect of crosslinker localization on the k-fiber's response, we mimicked the microneedle manipulation experiment synthetically for different distributions of k-fiber anchorage (Figure 4a,c-e). We assumed that the non-kMT network, to which the k-fiber is anchored, deforms elastically and exerts opposing forces proportional to the local deflection $y(x)$, effectively acting as a series of springs. Our treatment is similar to the modeling of the cellular cytoskeleton as an elastic material in earlier work (Brangwynne et al. 2006).

In addition, we assumed that the crosslinkers that anchor the k-fiber to the non-kMT network do not detach as a result of microneedle manipulation. If crosslinker detachment were widespread, microneedle manipulation in FCPT-treated spindles would have led to negative curvature positions occurring far away from the microneedle. We instead observed the position of negative curvature follow the microneedle, consistent with the response behavior predicted by a global anchorage scenario (Figure 4f-h). Based on this, we make the simplifying assumption that crosslinker detachment does not dominate the k-fiber's resistance to pivoting under manipulation.

Modeling of k-fibers under microneedle manipulation

Since manipulated k-fiber profiles have large deflections relative to the undeformed state ($|y'(x)| \ll 1$ is not satisfied everywhere), analytical approaches for obtaining an intuitive expression for $y(x)$ become infeasible. We therefore calculate $y(x)$ using a numerical integration method (details in Supplementary Information Section C). Specifically, we first parameterize the k-fiber profile via an arc length parameter s and prescribe a tangential angle $\theta(s)$ to each position (Kajtez et al. 2016). Writing the Euler-Bernoulli equation as $\kappa(s) = -d\theta/ds = M(s)/EI$ and using our estimate of the local bending moment $M(s)$ defined uniquely for each modeling scenario (Figures 2b, 3b, and 4a), we use a finite difference method to update the tangential angle at the next position $s+\Delta s$. Steps in the x- and y-directions are then performed using the updated tangential angle.

Model fitting and error estimation

In our model fitting procedure, we minimize the sum of squared errors. For a given data point (x_i, y_i) on the tracked k-fiber, we define the error as the minimal distance between that point and the k-fiber profile predicted by the model. If the point lies exactly on the predicted profile, the corresponding error will be zero.

We obtain the optimal set of model parameters through a combination of deterministic least-squares minimization and stochastic search algorithms initialized at multiple different locations in parameter space. This is done to prevent the method from converging to a local optimum. During parameter search,

we impose constraints on the parameter values to prevent the realization of unphysical configurations. These constraints are that the k-fiber profile cannot form loops, the inferred external force necessarily points outward, and forces of k-fiber end-points are lower than the critical buckling force. In addition, due to the uncertainties associated with precisely determining the positions of the microneedle contact, we let our search method consider positions within $0.5 \mu\text{m}$ of prescribed values. Details on estimating the fitting error and finding optimal model parameters are included in Supplementary Information Section D.

Modeling the binding states of PRC1

We calculate the free, singly bound and doubly bound populations of PRC1 using equilibrium thermodynamic modeling combined with the measured immunofluorescence of PRC1 and tubulin within the spindle. The free PRC1 population was estimated using measured intensities in intracellular regions with very low tubulin presence. Then, the free (c_f) and singly bound ($c_1(\mathbf{r})$) populations were related via $c_1(\mathbf{r}) = \rho_{\text{MT}}(\mathbf{r})c_f/K_d$, where $\rho_{\text{MT}}(\mathbf{r})$ is the local tubulin concentration. The dissociation constant K_d was inferred from the PRC1 and tubulin concentrations (measured in arbitrary units) in the pole-proximal regions of the spindle, where microtubules are known to be predominantly parallel (Euteneuer and McIntosh 1981). The doubly bound PRC1 population ($c_2(\mathbf{r})$) that contributes to k-fiber crosslinking was then obtained by subtracting the free and singly bound contribution from the measured total population. In Figure 4i, the concentration of actively engaged crosslinkers per tubulin, i.e., $c_2(\mathbf{r})/\rho_{\text{MT}}(\mathbf{r})$, was reported along the pole-pole axis. More details on the methodology of separating the binding states of PRC1 are provided in Supplementary Information Section E.

Quality of fit assessments and statistical analyses

When comparing the quality of fits between different modeling scenarios, we report the average root-mean-squared error (RMSE) values, along with the standard error of the mean (SEM) calculated for each scenario (Figure 2e, 3f, 5c).

We report other metrics for assessing the quality of fits in which we compare different signature shape features between the tracked profile and the model predicted profile. For the native k-fiber model scenarios, this includes the location of the peak deflection (Figure 2d,f). For manipulated k-fiber model scenarios, these include the location of curvature maximum (Figure 3g, 5d), the location of curvature minimum (Figure 3h, 5e), and the length over which k-fiber orientation is strictly preserved within 1° (Figure 3i, 5f).

We used the non-parametric two-sided Mann-Whitney U test when comparing two independent datasets and display the p-values on the figures (Figure 2e, 3f, 5c). In the text, each time we state a significant change or difference, the p-value for those comparisons were less than 0.05. To evaluate the correlations between the data and model (such as the comparison of signature shape features), we used the Pearson correlation function to test for linearity (Figure 3g-i, 5d-f, 5h). We report the coefficient of determination, R^2 , which assesses how well the model captures the variance in the features of interest observed in the data. To test for monotonic relationships between two variables (Figure 5i), we used the Spearman correlation function. In the legends we state what test was conducted. Quoted m 's refer to the number of individual cells and n 's refer to the number of individual k-fibers.

REFERENCES

- Belmonte, JM, Leptin, M, Nédélec, F. 2017. A theory that predicts behaviors of disordered cytoskeletal networks. *Molecular Systems Biology* **13**(9): 941.
- Bieling, P, Telley, IA, Surrey, T. 2010. A minimal midzone protein module controls formation and length of antiparallel microtubule overlaps. *Cell* **142**(3): 420-432.
- Brangwynne, CP, MacKintosh, FC, Kumar, S, Geisse, NA, Talbot, J, Mahadevan, L, Parker, KK, Ingber, DE, Weitz, DA. 2006. Microtubules can bear enhanced compressive loads in living cells because of lateral reinforcement. *Journal of Cell Biology* **173**(5): 733-741.
- Claessens, M, Bathe, M, Frey, E, Bausch, AR. 2006. Actin-binding proteins sensitively mediate f-actin bundle stiffness. *Nature Materials* **5**(9): 748-753.
- Crowder, ME, Strzelecka, M, Wilbur, JD, Good, MC, von Dassow, G, Heald, R. 2015. A comparative analysis of spindle morphometrics across metazoans. *Current Biology* **25**(11): 1542-1550.
- DeLuca, JG, Gall, WE, Ciferri, C, Cimini, D, Musacchio, A, Salmon, ED. 2006. Kinetochores microtubule dynamics and attachment stability are regulated by *hec1*. *Cell* **127**(5): 969-982.
- Elting, MW, Prakash, M, Udy, DB, Dumont, S. 2017. Mapping load-bearing in the mammalian spindle reveals local kinetochore fiber anchorage that provides mechanical isolation and redundancy. *Current Biology* **27**(14): 2112-2122.e2115.
- Elting, MW, Suresh, P, Dumont, S. 2018. The spindle: Integrating architecture and mechanics across scales. *Trends in Cell Biology* **28**(11): 896-910.
- Euteneuer, U, McIntosh, JR. 1981. Structural polarity of kinetochore microtubules in *ptk1* cells. *Journal of Cell Biology* **89**(2): 338-345.
- Forth, S, Hsia, KC, Shimamoto, Y, Kapoor, TM. 2014. Asymmetric friction of nonmotor maps can lead to their directional motion in active microtubule networks. *Cell* **157**(2): 420-432.
- Gadélha, H, Gaffney, EA, Goriely, A. 2013. The counterbend phenomenon in flagellar axonemes and cross-linked filament bundles. *PNAS* **110**(30): 12180-12185.
- Gittes, F, Meyhöfer, E, Baek, S, Howard, J. 1996. Directional loading of the kinesin motor molecule as it buckles a microtubule. *Biophysical Journal* **70**(1): 418-429.
- Gittes, F, Mickey, B, Nettleton, J, Howard, J. 1993. Flexural rigidity of microtubules and actin filaments measured from thermal fluctuations in shape. *Journal of Cell Biology* **120**(4): 923-934.
- Groen, AC, Needleman, D, Brangwynne, C, Gradinaru, C, Fowler, B, Mazitschek, R, Mitchison, TJ. 2008. A novel small-molecule inhibitor reveals a possible role of kinesin-5 in anastral spindle-pole assembly. *Journal of Cell Science* **121**(Pt 14): 2293-2300.
- Guild, J, Ginzberg, MB, Hueschen, CL, Mitchison, TJ, Dumont, S. 2017. Increased lateral microtubule contact at the cell cortex is sufficient to drive mammalian spindle elongation. *Molecular Biology of the Cell* **28**(14): 1975-1983.
- Heald, R, Tournebise, R, Blank, T, Sandaltzopoulos, R, Becker, P, Hyman, A, Karsenti, E. 1996. Self-organization of microtubules into bipolar spindles around artificial chromosomes in *xenopus* egg extracts. *Nature* **382**(6590): 420-425.
- Helmke, KJ, Heald, R, Wilbur, JD. 2013. Interplay between spindle architecture and function. *International Review of Cell and Molecular Biology* **306**: 83-125.
- Howell, BJ, McEwen, BF, Canman, JC, Hoffman, DB, Farrar, EM, Rieder, CL, Salmon, ED. 2001. Cytoplasmic dynein/dynactin drives kinetochore protein transport to the spindle poles and has a role in mitotic spindle checkpoint inactivation. *J Cell Biol* **155**(7): 1159-1172.
- Hutchins, JRA, et al. 2010. Systematic analysis of human protein complexes identifies chromosome segregation proteins. *Science* **328**(5978): 593-599.
- Jagrić, M, Risteski, P, Martinčić, J, Milas, A, Tolić, IM. 2021. Optogenetic control of *prc1* reveals its role in chromosome alignment on the spindle by overlap length-dependent forces. *Elife* **10**.

- Jiang, H, Zhang, J. 2008. Mechanics of microtubule buckling supported by cytoplasm. *Journal of Applied Mechanics* **75**(6).
- Kajtez, J, Solomatina, A, Novak, M, Polak, B, Vukušić, K, Rüdiger, J, Cojoc, G, Milas, A, Šumanovac Šestak, I, Risteski, P, Tavano, F, Klemm, AH, Roscioli, E, Welburn, J, Cimini, D, Glunčić, M, Pavin, N, Tolić, IM. 2016. Overlap microtubules link sister k-fibres and balance the forces on bi-oriented kinetochores. *Nature Communications* **7**: 10298.
- Khodjakov, A, Copenagle, L, Gordon, MB, Compton, DA, Kapoor, TM. 2003. Minus-end capture of preformed kinetochore fibers contributes to spindle morphogenesis. *Journal of Cell Biology* **160**(5): 671-683.
- Kiewisz, R, Fabig, G, Conway, W, Needleman, D, Muller-Reichert, T. 2021. Three-dimensional structure of the kinetochore-fibers in human mitotic spindles. *BioRxiv*.
- Landau, LD, Lifshitz, EM (1984). *Theory of elasticity*. Oxford, Pergamon P.
- Long, AF, Suresh, P, Dumont, S. 2020. Individual kinetochore-fibers locally dissipate force to maintain robust mammalian spindle structure. *Journal of Cell Biology* **219**(8).
- Mastrorade, DN, McDonald, KL, Ding, R, McIntosh, JR. 1993. Interpolar spindle microtubules in ptk cells. *Journal of Cell Biology* **123**(6): 1475-1489.
- McDonald, KL, O'Toole, ET, Mastrorade, DN, McIntosh, JR. 1992. Kinetochore microtubules in ptk cells. *Journal of Cell Biology* **118**(2): 369-383.
- McEwen, BF, Ding, Y, Heagle, AB. 1998. Relevance of kinetochore size and microtubule-binding capacity for stable chromosome attachment during mitosis in ptk1 cells. *Chromosome Research* **6**(2): 123-132.
- Merdes, A, Ramyar, K, Vechio, JD, Cleveland, DW. 1996. A complex of numa and cytoplasmic dynein is essential for mitotic spindle assembly. *Cell* **87**(3): 447-458.
- Milas, A, Tolić, I. 2016. Relaxation of interkinetochore tension after severing of a k-fiber depends on the length of the k-fiber stub. *Matters Select*.
- Mitchison, TJ. 1989. Polewards microtubule flux in the mitotic spindle: Evidence from photoactivation of fluorescence. *Journal of Cell Biology* **109**(2): 637-652.
- Nazockdast, E, Redemann, S. 2020. Mechanics of the spindle apparatus. *Seminars in Cell & Developmental Biology* **107**: 91-102.
- Neahring, L, Cho, NH, Dumont, S. 2021. Opposing motors provide mechanical and functional robustness in the human spindle. *Developmental Cell* **56**(21): 3006-3018.e3005.
- Nedelec, F, Foethke, D. 2007. Collective langevin dynamics of flexible cytoskeletal fibers. *New Journal of Physics* **9**(11): 427.
- Neumann, B, et al. 2010. Phenotypic profiling of the human genome by time-lapse microscopy reveals cell division genes. *Nature* **464**(7289): 721-727.
- Nicklas, RB. 1983. Measurements of the force produced by the mitotic spindle in anaphase. *J Cell Biol* **97**(2): 542-548.
- O'Toole, E, Morphew, M, McIntosh, JR. 2020. Electron tomography reveals aspects of spindle structure important for mechanical stability at metaphase. *Molecular Biology of the Cell* **31**(3): 184-195.
- Oriola, D, Jülicher, F, Brugués, J. 2020. Active forces shape the metaphase spindle through a mechanical instability. *PNAS* **117**(28): 16154-16159.
- Oriola, D, Needleman, DJ, Brugués, J. 2018. The physics of the metaphase spindle. *Annual Review of Biophysics* **47**: 655-673.
- Pamula, MC, Carlini, L, Forth, S, Verma, P, Suresh, S, Legant, WR, Khodjakov, A, Betzig, E, Kapoor, TM. 2019. High-resolution imaging reveals how the spindle midzone impacts chromosome movement. *Journal of Cell Biology* **218**(8): 2529-2544.
- Polak, B, Risteski, P, Lesjak, S, Tolić, IM. 2017. Prc 1-labeled microtubule bundles and kinetochore pairs show one-to-one association in metaphase. *EMBO Reports* **18**(2): 217-230.

- Portran, D, Zoccoler, M, Gaillard, J, Stoppin-Mellet, V, Neumann, E, Arnal, I, Martiel, JL, Vantard, M. 2013. Map65/ase1 promote microtubule flexibility. *Molecular Biology of the Cell* **24**(12): 1964-1973.
- Pyrpassopoulos, S, Shuman, H, Michael Ostap, E. 2020. Modulation of kinesin's load-bearing capacity by force geometry and the microtubule track. *Biophysical Journal* **118**(1): 243-253.
- Risteski, P, Božan, D, Jagrić, M, Bosilj, A, Pavin, N, Tolić, IM. 2021. Coordinated poleward flux of sister kinetochore fibers drives chromosome alignment. *BioRxiv*.
- Rubinstein, B, Larripa, K, Sommi, P, Mogilner, A. 2009. The elasticity of motor-microtubule bundles and shape of the mitotic spindle. *Physical Biology* **6**(1): 016005.
- Saxton, WM, Stemple, DL, Leslie, RJ, Salmon, ED, Zavortink, M, McIntosh, JR. 1984. Tubulin dynamics in cultured mammalian cells. *Journal of Cell Biology* **99**(6): 2175-2186.
- Schaedel, L, John, K, Gaillard, J, Nachury, MV, Blanchoin, L, Théry, M. 2015. Microtubules self-repair in response to mechanical stress. *Nature Materials* **14**(11): 1156-1163.
- Shimamoto, Y, Maeda, YT, Ishiwata, S, Libchaber, AJ, Kapoor, TM. 2011. Insights into the micromechanical properties of the metaphase spindle. *Cell* **145**(7): 1062-1074.
- Subramanian, R, Wilson-Kubalek, EM, Arthur, CP, Bick, MJ, Campbell, EA, Darst, SA, Milligan, RA, Kapoor, TM. 2010. Insights into antiparallel microtubule crosslinking by prc1, a conserved nonmotor microtubule binding protein. *Cell* **142**(3): 433-443.
- Suresh, P, Long, AF, Dumont, S. 2020. Microneedle manipulation of the mammalian spindle reveals specialized, short-lived reinforcement near chromosomes. *Elife* **9**: e53807.
- Tolić, IM, Pavin, N. 2021. Mitotic spindle: Lessons from theoretical modeling. *Molecular Biology of the Cell* **32**(3): 218-222.
- Trupinić, M, Kokanović, B, Ponjavić, I, Barišić, I, Šegvić, S, Ivec, A, Tolić, IM. 2020. The chirality of the mitotic spindle provides a passive mechanical response to forces and depends on microtubule motors and crosslinkers. *BioRxiv*.
- Ward, JJ, Roque, H, Antony, C, Nédélec, F. 2014. Mechanical design principles of a mitotic spindle. *Elife* **3**: e03398.
- Wittmann, T, Hyman, T (1998). Chapter 7 recombinant p50/dynamitin as a tool to examine the role of dynactin in intracellular processes. *Methods in cell biology*. C. L. Rieder, Academic Press. **61**: 137-143.
- Yusko, EC, Asbury, CL. 2014. Force is a signal that cells cannot ignore. *Mol Biol Cell* **25**(23): 3717-3725.
- Zaytsev, AV, Sundin, LJR, DeLuca, KF, Grishchuk, EL, DeLuca, JG. 2014. Accurate phosphoregulation of kinetochore-microtubule affinity requires unconstrained molecular interactions. *Journal of Cell Biology* **206**(1): 45-59.

MAIN FIGURE LEGENDS

Figure 1: Overview of the experiment-theory interplay used for studying the mechanics of k-fiber anchorage in the mammalian spindle

Top: Schematic of the experimental perturbation performed in (Suresh et al. 2020). Microneedle (blue circle) manipulation of outer k-fibers revealed that k-fibers do not freely pivot near kinetochores ensuring the maintenance of k-fiber orientation in the spindle center, and pivot more freely around poles. Bottom: Coarse-grained modeling approach of the k-fiber in the spindle context based on Euler-Bernoulli beam theory. Model complexity is progressively increased to identify the minimal set of forces necessary and sufficient to recapitulate (dashed blue lines) k-fiber shapes in the data. From left to right: we test models with different forces (black arrows) and moments (red and green arrows) at k-fiber ends (pole and kinetochore) to recapitulate native k-fibers, and, then test models of increasing complexity (first with forces and just a moment at the pole, then a moment at the kinetochore and finally lateral anchorage over different length scales along the k-fiber (purple lines)) to recapitulate manipulated k-fibers. Here, forces (represented as straight arrows) and moments (represented as curved arrows) together define the bending moment $M(x)$ along the k-fiber, while k-fiber shape is determined via curvature $\kappa(x)$.

Figure 2: Forces and moments acting on k-fiber ends alone can capture native mammalian k-fiber shapes. See also Figure 2 - figure supplement 1-2.

- (a) Schematic of the minimal model for native/unmanipulated k-fibers. Pole and kinetochore ends are oriented along the x-axis (x from 0 to L). Only forces (F_x, F_y ; red linear arrows) and moments (M_p, M_k ; red curved arrows) acting on k-fiber ends are considered. The moment balance condition $M(x)$ shown below defines the k-fiber shape at every position via the Euler-Bernoulli equation.
- (b) The unique mechanical contribution of each model component to a signature shape feature of native k-fibers. The white circle denotes the k-fiber's peak position (location where the deflection $y(x)$ is the largest). Each component uniquely shifts the peak position relative to the middle axis (dashed line at $x=L/2$).
- (c) Representative image of a PtK2 GFP-tubulin metaphase spindle (GFP-tubulin, white) with tracked k-fiber profiles overlaid (orange).
- (d) Distribution of peak positions of native k-fibers tracked from PtK2 GFP-tubulin cells at metaphase ($m=26$ cells, $n=83$ k-fibers), normalized by the k-fiber's end-to-end distance, with the middle axis (black dashed line) at $x=0.5$.
- (e) Root-mean-squared error (RMSE) between the experimental data ($m=26$ cells, $n=83$ k-fibers) and the model-fitted shape profiles. Plot shows mean \pm SEM.
- (f) Comparison of normalized peak positions between the experimental data ($m=26$ cells, $n=83$ k-fibers) and model-fitted shape profiles for each model scenario. The model with F_x, F_y and M_p (blue points) best captures the peak positions in the data (Pearson R^2 coefficient = 0.85, $p = 7e-22$). Black dashed line corresponds to an exact match of peak positions between the model prediction and measurement data.
- (g) Tracked k-fiber profiles from the spindle image (c) and their corresponding model fits performed with the minimal model with F_x, F_y and M_p , but not M_k .

Figure 3: Manipulated k-fiber response cannot be captured solely by end-point anchoring forces and moments. See also Figure 3 - figure supplement 1 and Figure 3 - video 1.

- (a) Top: Representative images of a PtK2 spindle (GFP-tubulin, white) before and at the end of microneedle manipulation. Tracked k-fiber profiles (orange) and the microneedle (white circle) are overlaid (shifted for k-fiber) on the images. Bottom: Curvature profiles along the native/unmanipulated and manipulated k-fibers. Time in min:sec. Scale bar = 5 μ m.

- (b) Schematic of the model for the manipulated k-fiber that includes \mathbf{F} (F_x, F_y), M_p and M_k is set to zero (minimal native k-fiber model), along with an external force from the microneedle \mathbf{F}_{ext} (blue circle). The moment balance condition is shown below, where the indicator function (I) specifies the region over which the corresponding term in the equation contributes to $\mathbf{M}(x)$.
- (c) Top: Manipulated shape profile extracted from the image in (a) (orange line), together with the best fit profile generated by the model (blue line) where $M_k=0$. Stars denote the minimum of the negative curvature. The model does not capture the negative curvature observed in the data (orange star) (b). Bottom: Curvature profiles along the k-fiber in the data (left) and the model (right).
- (d) Schematic of the model for the manipulated k-fiber defined by the parameters in (b) and a negative moment at the kinetochore, M_k (orange arrow).
- (e) Top: Manipulated shape profile extracted from the image in (a) (orange line), together with the best fit profile generated by the model (blue line) with $M_k \neq 0$ (d). Stars denote the minimum of the negative curvature. The model generates a negative curvature (blue star) but cannot capture its position accurately from the data (orange star). Bottom: Curvature along the k-fiber in the data (left) and the model (right).
- (f) Root-mean-squared error (RMSE) between the experimental data ($m=18$ cells, $n=19$ k-fibers) and the best fitted profiles from the models without ($M_k=0$) and with ($M_k \neq 0$) a moment at the kinetochore. A comparison is made also with the RMSE of the minimal native k-fiber model (control, Figure 2a). Plots show mean \pm SEM.
- (g-i) Comparison of manipulated k-fiber profiles ($m=18$ cells, $n=19$ k-fibers) between the data and model ($M_k \neq 0$) for (g) positions curvature maxima (Pearson R^2 coefficient = 0.95, $p = 4e-13$), (h) positions of curvature minima (Pearson R^2 coefficient = 0.27, $p = 1e-1$), and (i) the distance over which the orientation angle is preserved within 1° (Pearson R^2 coefficient = 0.43, $p = 9e-4$).

Figure 4: Mapping the relationship between anchorage length scales and manipulated k-fiber shapes constrains the spatial distribution of lateral anchorage. See also Figure 4 - figure supplement 1-2 and Figure 4 - video 1.

- (a) Schematic of the model for the manipulated k-fiber with crosslinking forces $f(x')$ distributed over a length scale σ near the kinetochore. The model also includes endpoint forces \mathbf{F} , and an external force from the microneedle \mathbf{F}_{ext} . The crosslinking force density is $f(x') = -k y(x') \hat{y}$, where k is the effective spring constant and \hat{y} is the unit vector in the y direction. Since we do not expect M_p to influence the crosslinking behavior near the kinetochore, for simplicity we set $M_p = 0$ in simulation studies of this section. Indicator function (I) in the moment balance condition specifies the region over which the corresponding term contributes to $\mathbf{M}(x)$.
- (b) Distance of curvature minima as a function of distance of the microneedle from the kinetochore ($m=18$ cells, $n=19$ k-fibers), in wildtype spindle manipulations (Suresh et al. 2020). Plot shows mean \pm SEM (black).
- (c) Distance of curvature minima as a function of distance of external force application from the kinetochore calculated for model-simulated profiles where the length scale of anchorage (σ , inset) is tuned in the range 1-10 μm (denoted by shades of green). Variation of the position of external force application mimics the wildtype manipulation experiments in (b). Dashed lines denote the spread of curvature minima positions in (b).
- (d,e) Profiles generated by the model in (a) with (d) $\sigma = 2 \mu\text{m}$ and (e) $\sigma = 10 \mu\text{m}$ for varying positions of external force application (yellow arrow), and the resulting positions of curvature minima (red star). Dashed lines represent the distances from the kinetochore to the external force position (yellow dashed line) and curvature minimum position (red dashed line).
- (f) Top: Representative images of a PtK2 spindle (GFP-tubulin, white) treated with FCPT to rigor-bind the motor Eg5, in its unmanipulated (00:00) and manipulated (00:55) states. The microneedle (white circle) and tracked k-fibers (orange) are displayed on images. Bottom: Curvature along the tracked k-fibers. Time in min:sec.

- (g) Percentage of microneedle manipulations that gave rise to a negative curvature near the kinetochore and the pole in wildtype (grey; $m=18$ cells, $n=19$ k-fibers (Suresh et al. 2020)) and FCPT-treated (light blue; $m=11$ cells, $n=13$ k-fibers) spindles.
- (h) Distance of curvature minima as a function of distance of the microneedle from the kinetochore in FCPT-treated spindle manipulations ($m=9$ cells, $n=13$ k-fibers). Plot shows mean \pm SEM (black).
- (i) Left: Normalized distribution of PRC1's total abundance levels (c_{tot} , cyan lines) measured from immunofluorescence images (fluorescence intensity, $n=5$ cells) (Suresh et al. 2020) and actively engaged (doubly bound, c_2 , grey lines) PRC1 calculated from the c_{tot} using the equilibrium binding model along the spindle's pole-pole axis ($x=0$ represents the spindle midplane). The region along k-fibers where negative curvature is observed in the wildtype dataset is highlighted in orange and the inter-kinetochore region (double-sided black arrow) denotes the chromosome region between the sister k-fibers (inset). Plot shows mean \pm SEM for both PRC1 populations. Right: Three distinct binding states of PRC1 considered in our analysis. The concentration of actively engaged PRC1 (c_2) is calculated by subtracting the free and singly bound contributions from the total PRC1 concentration (c_{tot}). In the expression for the singly-bound PRC1 population, $\rho_{\text{MT}}(\mathbf{r})$ stands for the local tubulin concentration, while K_d represents the dissociation constant of PRC1– single microtubule binding.

Figure 5: Minimal k-fiber model infers strong lateral anchorage within 3 μm of kinetochores to be necessary and sufficient to recapitulate manipulated shape profiles. See also Figure 5 - figure supplement 1-2.

- (a) Schematic of the model for the manipulated k-fiber with an effective point crosslinking force (\mathbf{F}_c , dark green arrow) a distance λ_c away from the kinetochore-end introduced to capture the effect of the distributed crosslinking forces (light green arrows) localized near the kinetochore. The model also includes the parameters \mathbf{F} , M_p and \mathbf{F}_{ext} . Indicator function (I) in the moment balance condition specifies the region over which the corresponding term contributes to $\mathbf{M}(x)$.
- (b) Left: Manipulated shape profile extracted from the image in Figure (3a) (orange line), overlaid with the best fitted profile inferred by the model with \mathbf{F}_c (blue line). Stars denote the minimum of the negative curvature, which matches well between the data (orange star) and model (blue star). Right: Curvature along the k-fiber in the data (top) and the model (bottom).
- (c) Root-mean-square error (RMSE) between the experimental data and all k-fiber models tested: $M_k=0$ (Figure 3b), $M_k \neq 0$ (Figure 3d) and \mathbf{F}_c (Figure 5a). A comparison is made with the minimal native k-fiber model (control, Figure 2a). Plot shows mean \pm SEM.
- (d-f) Comparison of manipulated k-fiber profiles ($m=14$ cells, $n=15$ k-fibers) between the data and model (\mathbf{F}_c) for (d) positions curvature maxima (Pearson R^2 coefficient = 0.97, $p = 8e-12$), (e) positions of curvature minima (Pearson R^2 coefficient = 0.9, $p = 1e-7$), and (f) the distance over which the orientation angle is preserved within 1° (Pearson R^2 coefficient = 0.85, $p = 2e-4$). Grey lines link the corresponding profiles.
- (g) Distribution of the length scales of anchorage (λ_c) inferred by the minimal model with \mathbf{F}_c for all k-fibers in the data.
- (h) Positions of curvature minima extracted from data profiles vs. the location of the effective crosslinking force near kinetochores inferred by the model (Pearson R^2 coefficient = 0.85, $p = 1e-6$), with the black dashed line representing perfect correspondence between them.
- (i) Left: Possible scenarios for models of how anchorage force \mathbf{F}_c might correlate with the microneedle force \mathbf{F}_{ext} – linearly as is characteristic to an elastic response (model A), or linearly up to a force threshold, beyond which detachment of anchorage occurs (model B). Right: Microneedle force \mathbf{F}_{ext} vs. anchorage force \mathbf{F}_c inferred from the model shows a monotonic relationship. Grey dashed line represents the best-fit line (Spearman R coefficient = 0.85, $p = 4e-4$).

Figure 6: Coarse-grained modeling of k-fiber shapes reveals how spatially regulated k-fiber anchorage gives rise to spatially distinct mechanics across the mammalian spindle

Top: A summary of outcomes for the native k-fiber model and the various iterations of the manipulated k-fiber model, where we systematically built up model (blue lines) complexity (left to right) to capture the observed shapes (orange lines). The minimal model (right most panel), which produced the best fits, includes forces at k-fiber ends, a moment at the pole, and localized crosslinking forces (captured through an effective point crosslinking force). The minimal model (right most panel) also revealed a quantitative and predictive link between the position of the negative curvature (red star) and the length scale of k-fiber anchorage (position of purple arrow from the kinetochore-end). Bottom: Functional implications of models with different length scales of anchorage (0, 3, 10 μm from left to right) tested in our study. Unlike the scenarios with no anchorage and anchorage along the entire length (left and right panel), anchorage up to 3 μm from the kinetochore (middle panel) is best suited to ensure that k-fibers remain straight in the spindle center and aligned with their sister (purple line), while also allowing them to pivot and focus at the pole (green pivot point).

SUPPLEMENTARY FIGURE LEGENDS

Figure 2 - figure supplement 1: The minimal model does not require a moment at the kinetochore to capture native k-fiber shapes.

- (a) Root-mean-squared error (RMSE) between the experimental data ($m=26$ cells, $n=83$ k-fibers) and the model fitted shape profiles performed for the model with \mathbf{F} (F_x, F_y) and M_p , without (blue) and with (purple) M_k . Plot shows mean \pm SEM.
- (b) Distribution (log scale on the x-axis) of the ratio of the inferred values of M_p and M_k for the model with \mathbf{F} , M_p and M_k . The black dashed line is where $M_p = M_k$. In most cases, M_p is significantly larger than M_k .

Figure 2 - figure supplement 2: No detectable trend between inner and outer k-fibers is observed in the parameters inferred by the minimal model.

- (a) Schematic showing the angle between the k-fiber's pole-kinetochore axis and the spindle's pole-pole axis (α). An example of an inner k-fiber having low α and an outer k-fiber having high α is depicted below.
- (b) Averaged native k-fiber profiles (data) normalized by end-to-end distance (L) and binned according to k-fiber angle in the spindle (α) in 10° increments, with error bars representing the standard deviation of the profiles within the corresponding bin.
- (c) The largest y-deflection (y_{\max}) for all native k-fiber profiles (data) plotted as a function of their angle in the spindle (α). Outer k-fibers have larger y_{\max} values. Plot shows mean \pm SEM.
- (d-e) Moment at the pole M_p (d) and F_x (e) inferred for the minimal model (\mathbf{F} and M_p) fits plotted as a function of the k-fiber angle in the spindle (α) shows no detectable difference across different angles. Plot shows mean \pm SEM.
- (f) K-fiber length, normalized to the spindle's pole-pole distance (data) plotted as a function of k-fiber angle in the spindle (α) shows increase in length from inner to outer k-fibers.
- (g) Largest y-deflection (y_{\max}) of k-fiber profiles as a function of their angle in the spindle (α) as calculated from the data in (c) (black) and as captured by the minimal native k-fiber model (blue) only through increasing k-fibers lengths with the angle α (blue). To generate the model profiles, the moment at the pole (M_p) and the axial force (F_x) were taken as their average inferred values and the k-fiber length (L_{contour}) was chosen by calculating $\langle L_{\text{contour}}/d_{\text{PP}} \rangle$ for all k-fibers in each bin (see (f)) and multiplying it by the mean pole-pole distance over all spindles, $d_{\text{PP}} = 16.27 \pm 0.78 \mu\text{m}$. Error bars for

model estimates were obtained by accounting for the errors (SEM) in estimating M_p , F_x , $\langle L_{\text{contour}}/d_{pp} \rangle$, and d_{pp} .

Figure 3 - figure supplement 1: K-fiber orientation in model profiles with $M_k \neq 0$ is preserved over much shorter distances than in experimental data, irrespective of the chosen threshold angle.

(a,b) The distance from the kinetochore where the orientation angle is preserved within 3° (a) and 5° (b), calculated for all measured experimental data and model-fitted profiles ($m=18$ cells, $n=19$ k-fibers). Grey lines link the corresponding profiles.

Figure 4 - figure supplement 1: Microneedle displacement over time in FCPT-treated spindle manipulations.

Blue lines represent individual manipulations. Plot shows mean \pm SD (black).

Figure 4 - figure supplement 2: Negative curvature does not remain localized near chromosomes when anchorage levels in the model mimic PRC1 intensity in the spindle.

(a) Distribution of PRC1 abundance normalized to tubulin (fluorescence intensity, $n=5$ cells) along the spindle's pole-pole axis from the midplane ($x=0$ where chromosomes are, left inset) to each pole, measured from immunofluorescence images of spindles (right inset, white box denotes the region over which intensity was measured) (Suresh et al. 2020). Plot shows mean \pm SEM.

(b,c) Distance of curvature minima as a function of distance of external force application from the kinetochore in an anchorage scenario mimicking normalized PRC1 abundance (a) with an enrichment of up to $3 \mu\text{m}$ near the kinetochores and a 60% basal level along the k-fiber as a (b) step function and (c) gaussian distribution. Anchorage levels in space for each scenario are shown in insets.

Figure 5 - figure supplement 1: Validating the use of a point crosslinking force to capture distributed anchorage.

(a) An example simulated k-fiber profile generated by the distributed crosslinking model with $\sigma = 3 \mu\text{m}$ (Figure 4a, orange), and a profile fitted by the model with F_c (Figure 5a, blue) overlaid.

(b) Integrated anchorage forces from the simulated profiles plotted against the inferred crosslinking force (F_c), for a range of external force positions (1-5 μm from the kinetochore, denoted by shades of green). The grey dashed line is where $F_c = \int f(x') dx'$. Forces reported are normalized by the flexural rigidity EI , with the units on the axes given by μm^{-2} .

(c) Simulated profile from (a) zoomed-in to the anchorage region (3 μm near chromosomes). The y-axis corresponds to anchorage deformation, which is only large near the edge of the anchored region, where F_c is inferred.

(d) Input distributed anchorage length scale (σ) that generated the simulated profiles plotted against the inferred effective crosslinking force (x_c), for a range of external force positions (1-5 μm from the kinetochore, denoted by shades of green). The grey dashed line is where $x_c = \sigma$.

Figure 5 – figure supplement 2: Minimal model with point crosslinking force fails to recapitulate the data only in cases with large positive curvature values

(a) Root-mean-square error (RMSE) between the data and the minimal model with F_c (Figure 5a) as a function of the maximum curvature value along k-fibers found at the site of microneedle force application. The blue points represent the successful fits with low RMSE and grey points represent the cases where the model fails to fit the data and produces higher RMSE.

(b) Example of manipulated shape profile with high positive curvature regions at the site of force application (data, orange) where the model (blue) fails to accurately recapitulate them.

VIDEO LEGENDS

Figure 3 – video 1: Microneedle manipulation of PtK2 metaphase spindles reveals the restriction of k-fiber pivoting around the kinetochore but not the pole

Microneedle manipulation of a metaphase spindle in a PtK2 (GFP-tubulin, white) cell. The microneedle (Alexa-647, white circle) exerts a force on the outer k-fiber over 60 s to mechanically challenge its anchorage to the spindle. The k-fiber is restricted from freely pivoting near the chromosome (negative curvature, orange arrow) and maintains a straight orientation, but is able to pivot at the pole, thereby giving rise to spatially distinct mechanical responses across the different regions of the spindle. Time in min:sec. Video was collected using a spinning disk confocal microscope, at a rate of 1 frame every 7 s before and during manipulation. Video has been set to play back at constant rate of 5 frames per second. Movie corresponds to still images from Figure 3a.

Figure 4 – video 1: Microneedle manipulation of FCPT-treated PtK2 spindles reveals negative curvature on both sides of the microneedle and not localized near kinetochores

Microneedle manipulation of a metaphase spindle in a PtK2 (GFP-tubulin, white) cell treated with FCPT to rigor-bind the motor Eg5. The microneedle (Alexa-647, white circle) exerts a force on the outer k-fiber over 60 s to mechanically challenge its anchorage to the spindle. The k-fiber is restricted from freely pivoting near the chromosome (negative curvature, orange arrowhead) and near the pole (negative curvature, yellow arrow), leading to a loss of mechanical distinction between the two regions. The negative curvature also does not remain localized near the chromosome (unlike in control spindles), and is instead away from the chromosome (orange line) and closer to the microneedle. Time in min:sec. Video was collected using a spinning disk confocal microscope, at a rate of 1 frame every 8 s before and during manipulation. Video has been set to play back at constant rate of 5 frames per second. Movie corresponds to still images from Figure 4f.

Figure 1: Overview of the experiment–theory interplay used for studying the mechanics of k-fiber anchorage in the mammalian spindle

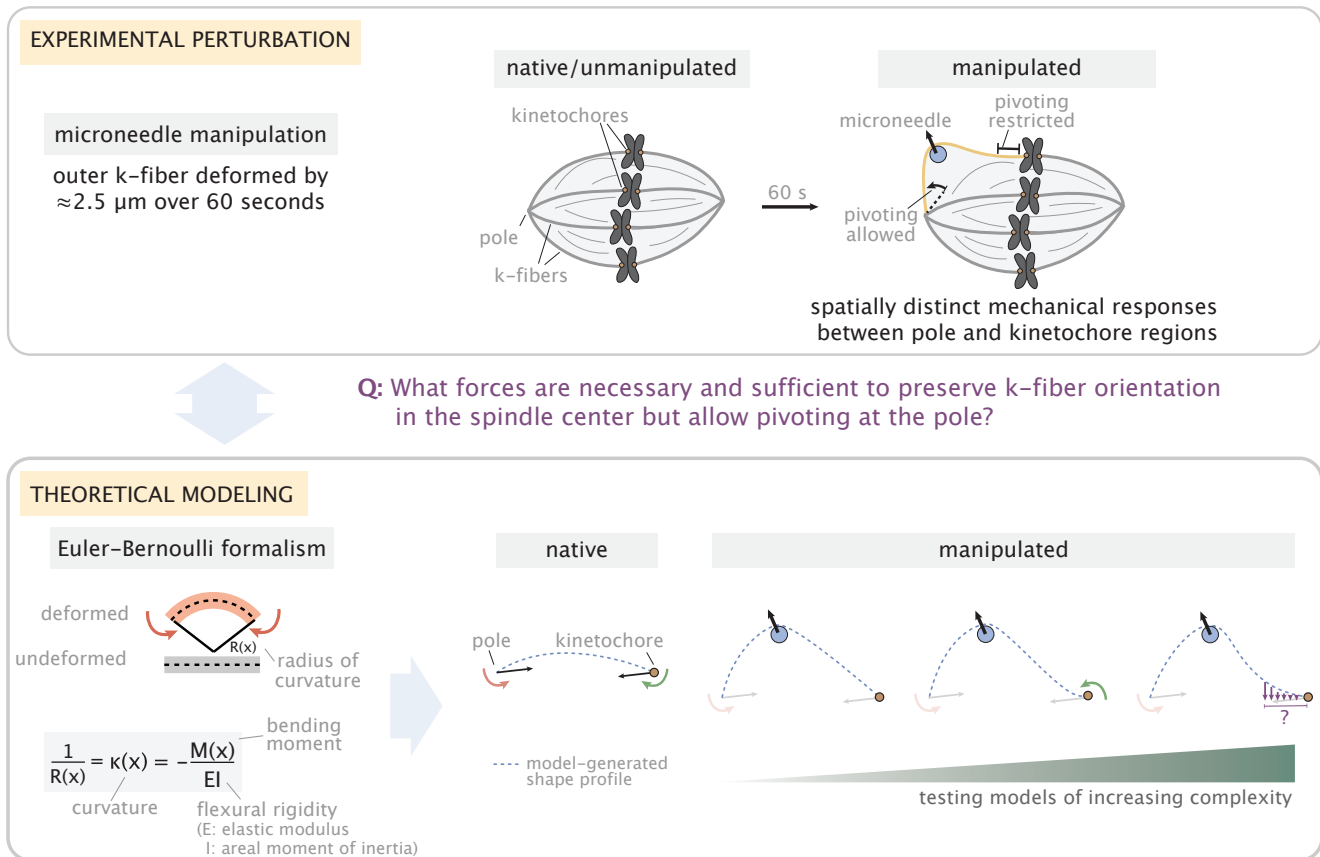


Figure 2: Forces and moments acting on k-fiber ends alone can capture native mammalian k-fiber shapes

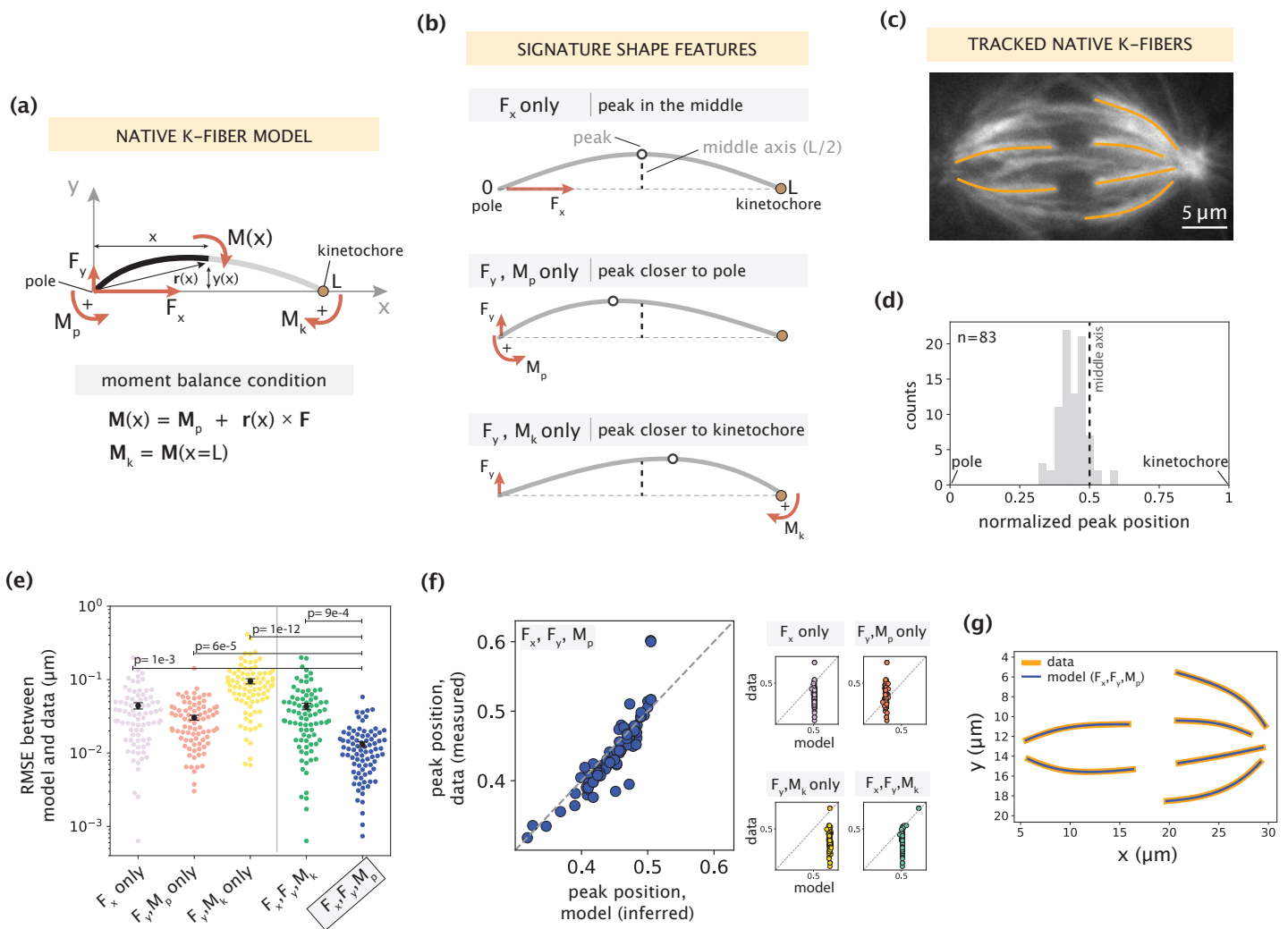


Figure 3: Manipulated k-fiber shapes cannot be captured solely by spindle forces and moments acting on k-fiber ends

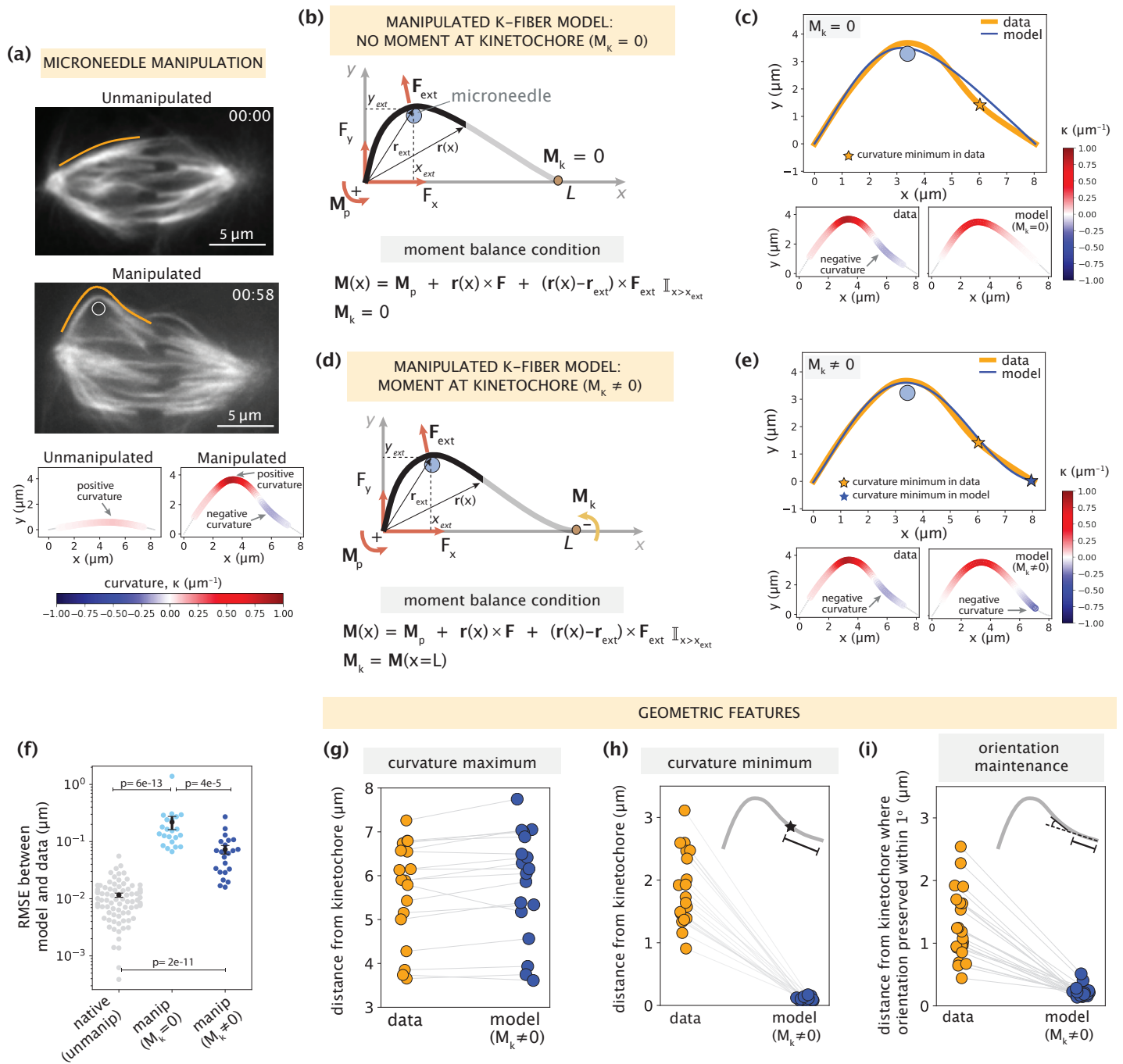


Figure 4: Mapping the relationship between anchorage length scales and manipulated k-fiber shapes constrains the spatial distribution of lateral anchorage

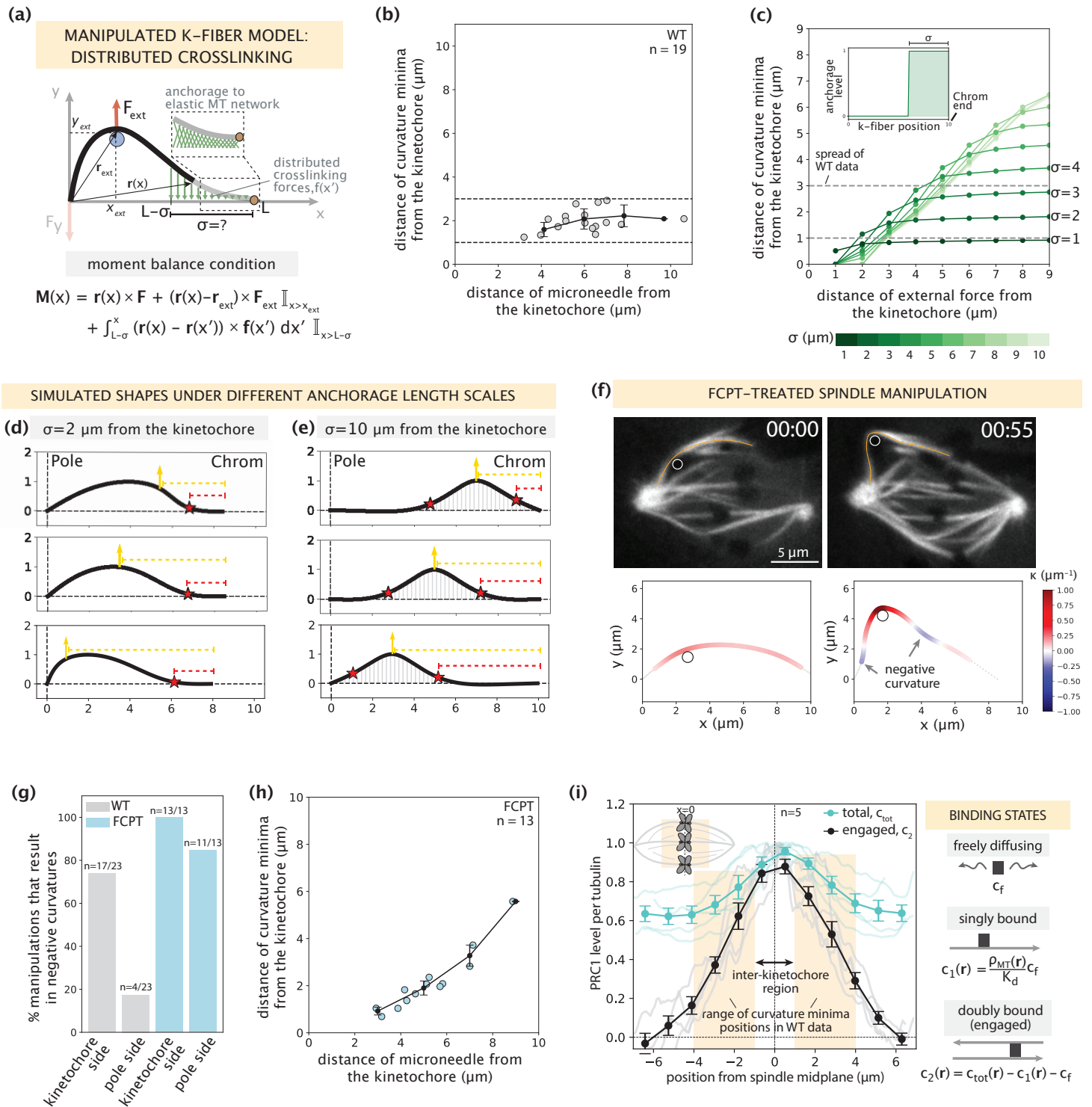


Figure 5: Minimal k-fiber model infers strong lateral anchorage within 3 μm of kinetochores to be necessary and sufficient to recapitulate manipulated shape profiles

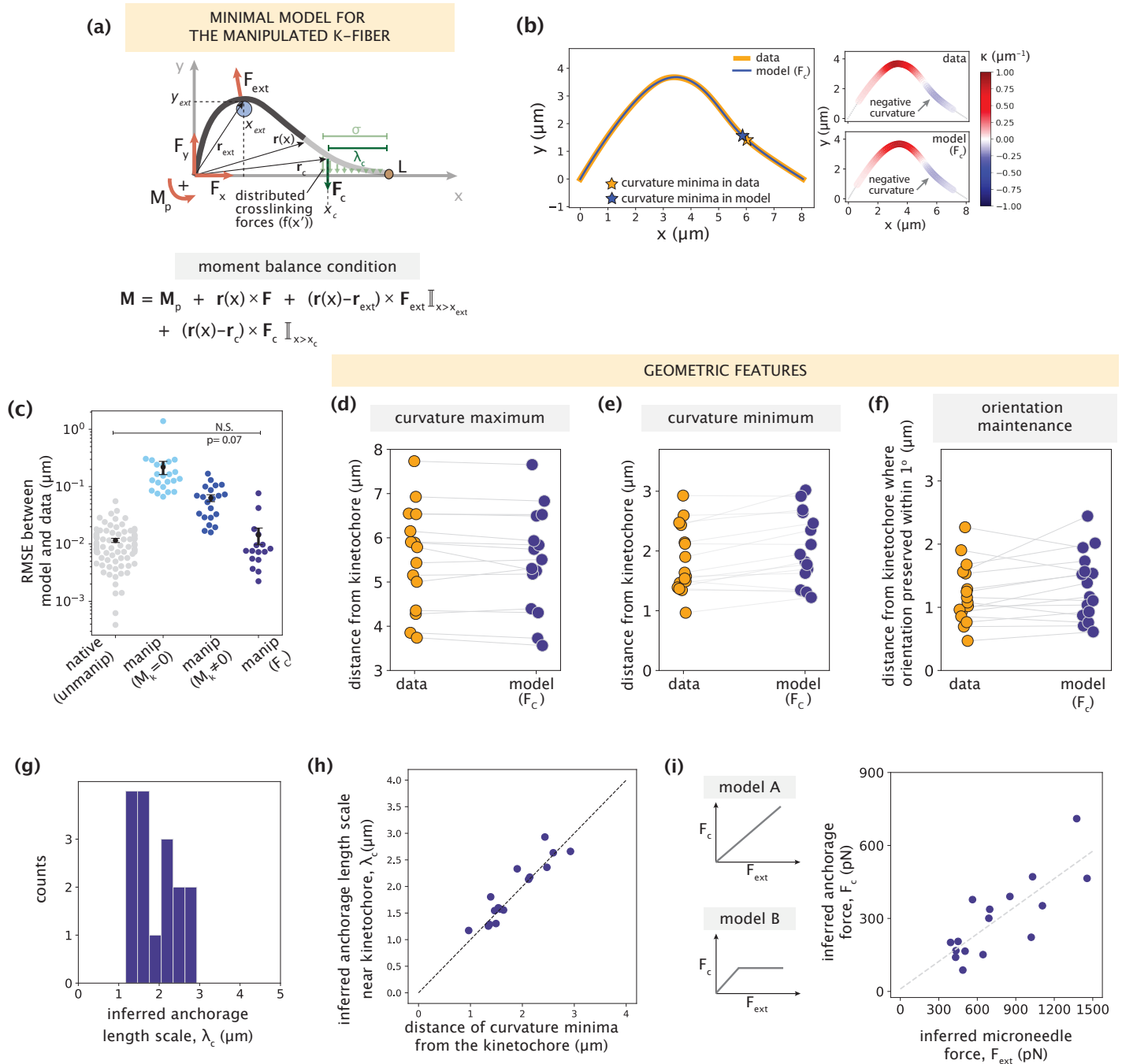


Figure 6: Coarse-grained modeling of k-fiber shapes reveals how spatially regulated k-fiber anchorage gives rise to spatially distinct mechanics across the mammalian spindle

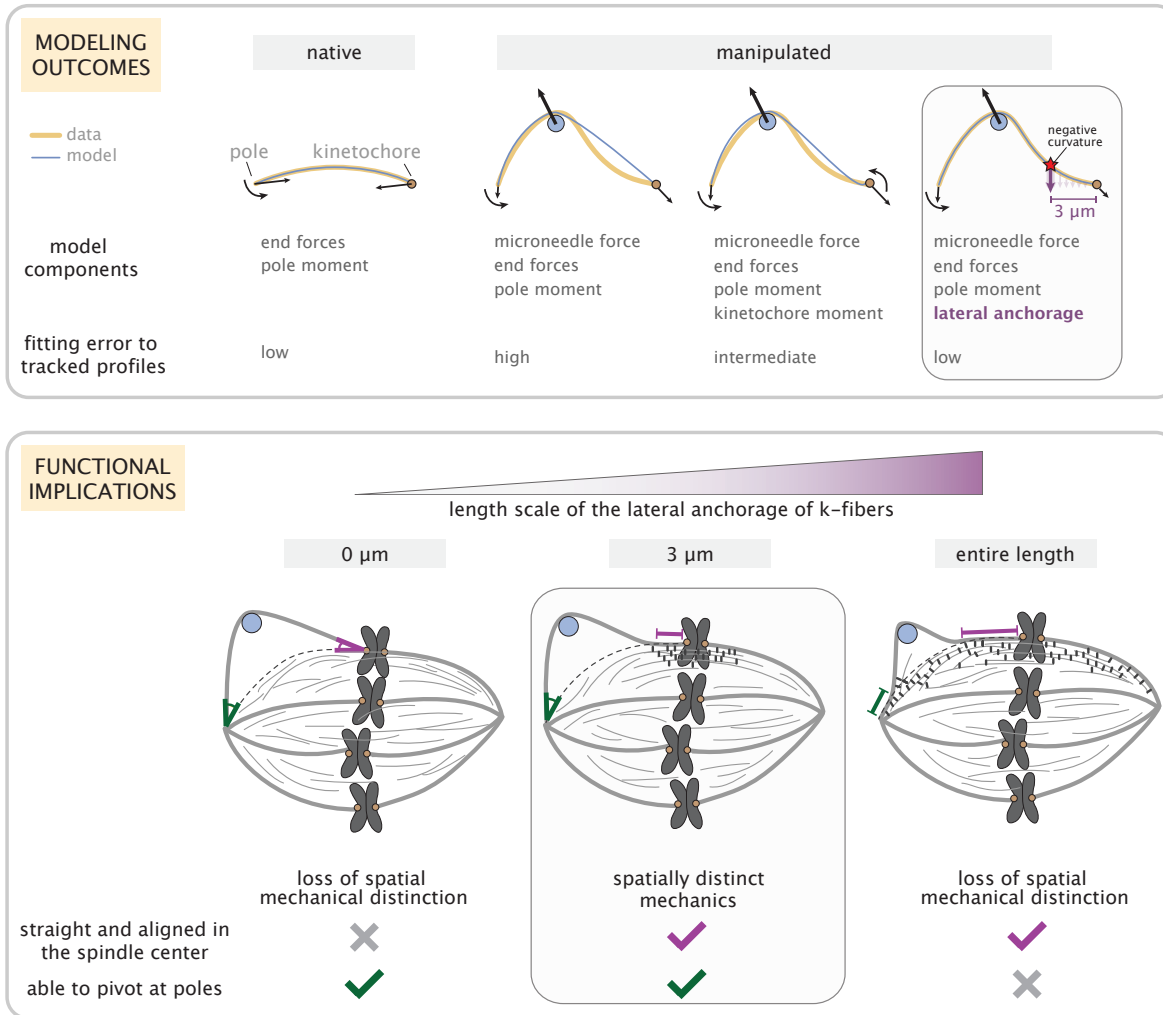


Figure 2 – figure supplement 1

The minimal model does not require a moment at the kinetochore to capture native k-fiber shapes

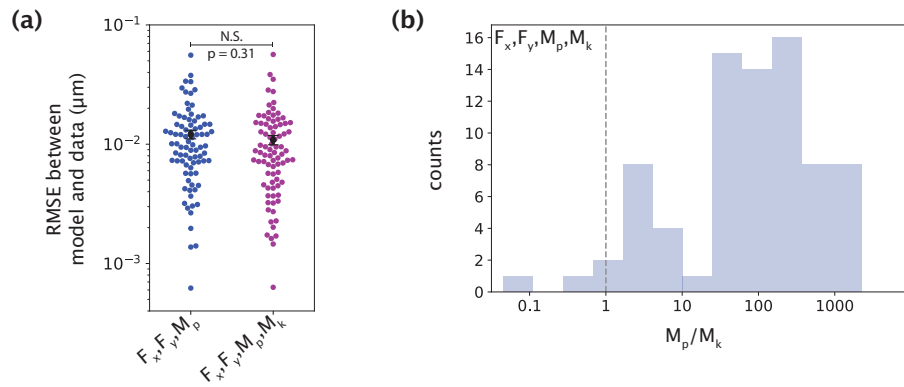


Figure 2 – figure supplement 2

No detectable trend between inner and outer k-fibers is observed in the parameters inferred by the minimal model

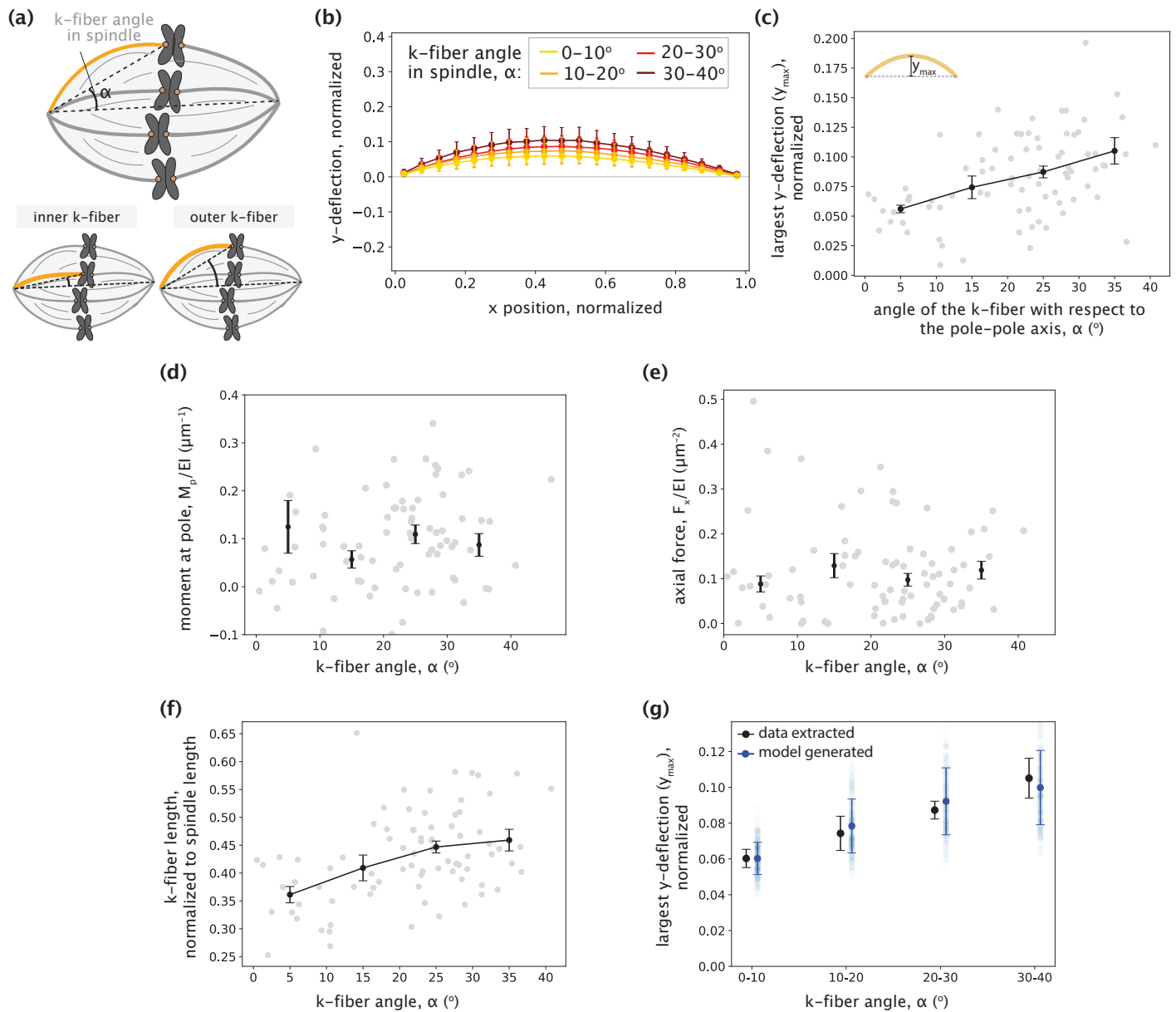


Figure 3 – figure supplement 1

K-fiber orientation in model profiles with $M_k \neq 0$ is preserved over much shorter distances than in experimental data, irrespective of the chosen threshold angle

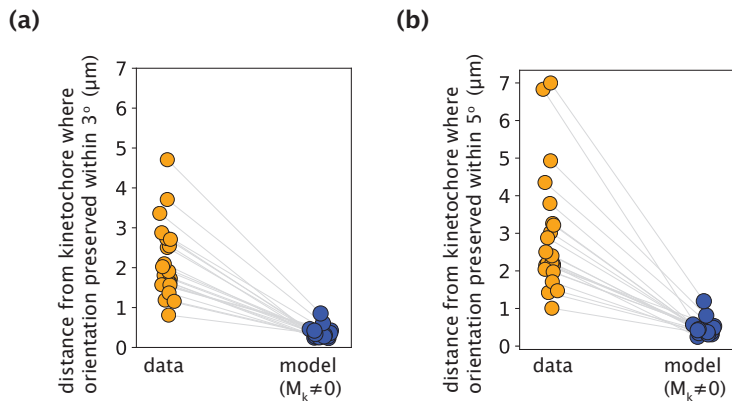


Figure 4 – figure supplement 1
Microneedle displacement over time in FCPT-treated spindle manipulations

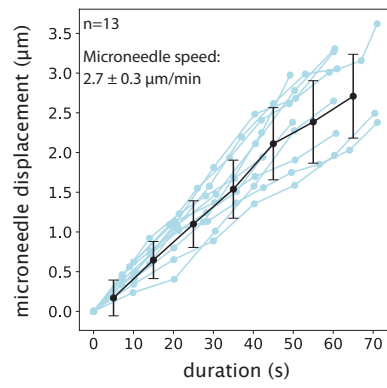


Figure 4– figure supplement 2

Negative curvature does not remain localized near chromosomes when anchorage levels in the model mimic PRC1 intensity in the spindle

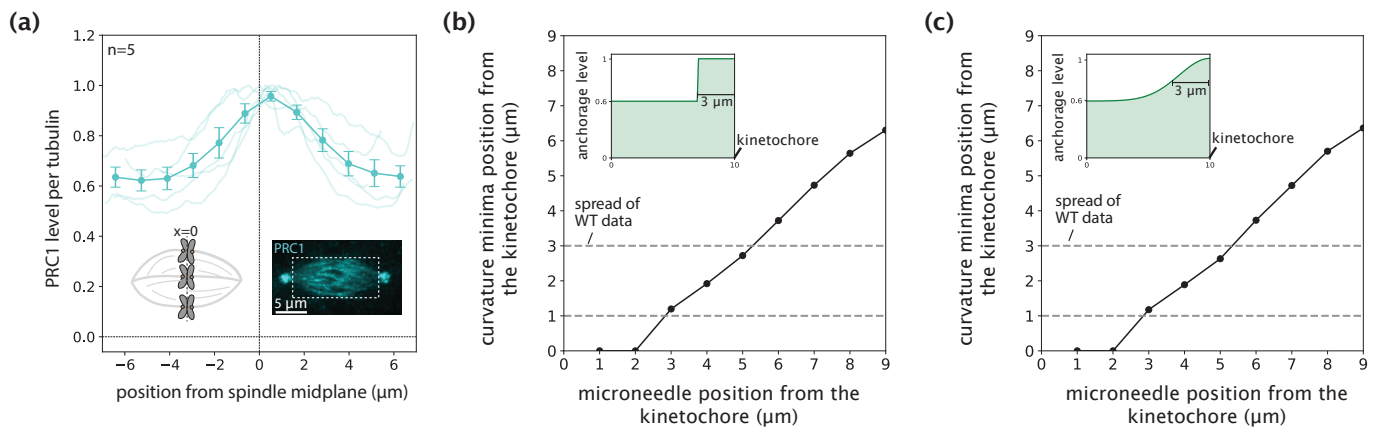


Figure 5 – figure supplement 1

Validating the use of a point crosslinking force to capture distributed anchorage

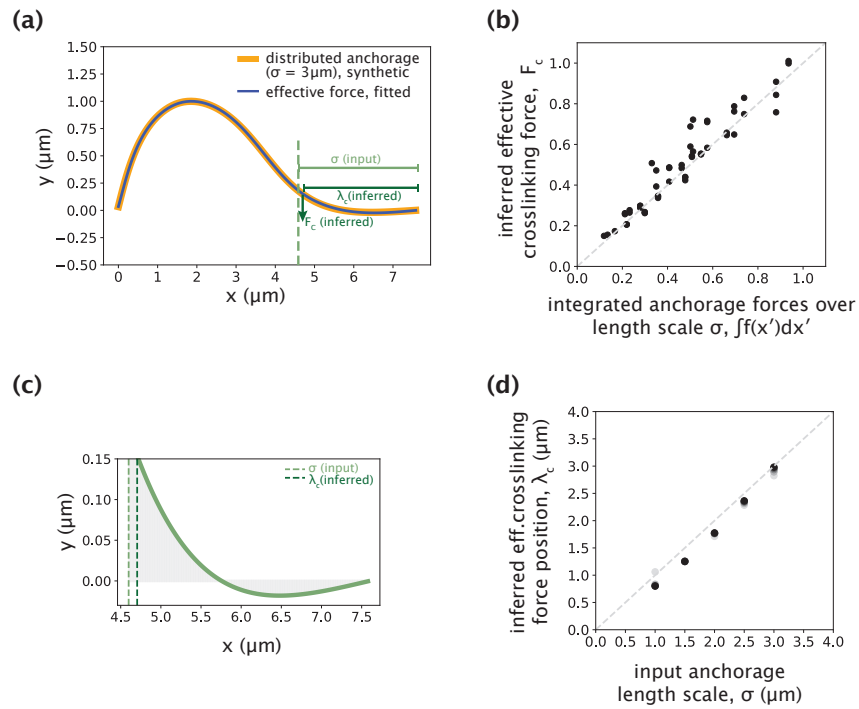


Figure 5– figure supplement 2

Minimal model with point crosslinking force fails to recapitulate the data only in cases with large positive curvature values

